

SIGLEC6 RABBIT PAB

Cat.#: S220437

Product Name: Anti-SIGLEC6 Rabbit Polyclonal Antibody

Synonyms: CD327; CD33L; OBBPI; CD33L1; CD33L2; CDW327

UNIPROT ID: O43699 (Gene Accession - NP_001171018)

Background: This gene encodes a member of the SIGLEC (sialic acid binding immunoglobulin-like lectin) family of proteins. The encoded transmembrane receptor binds sialyl-TN glycans and leptin. Placental expression of the encoded protein is upregulated in preeclampsia.

Immunogen: Synthetic peptide of human SIGLEC6

Applications: ELISA, WB, IHC

Recommended Dilutions: IHC: 50-300;WB: 500-2000;ELISA: 5000-10000

Host Species: Rabbit

Clonality: Rabbit Polyclonal

Isotype: Immunogen-specific rabbit IgG

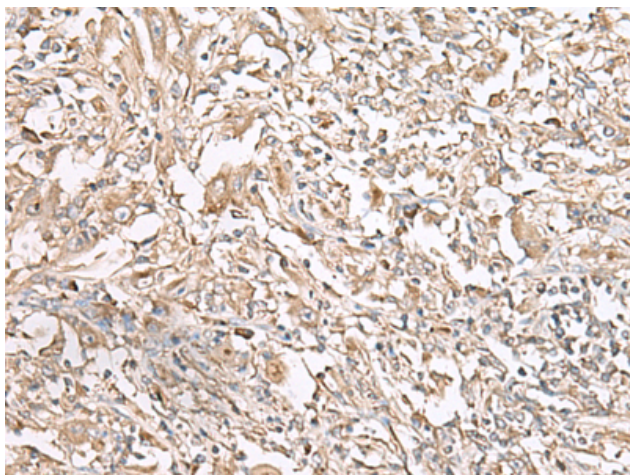
Purification: Antigen affinity purification

Species Reactivity: Human

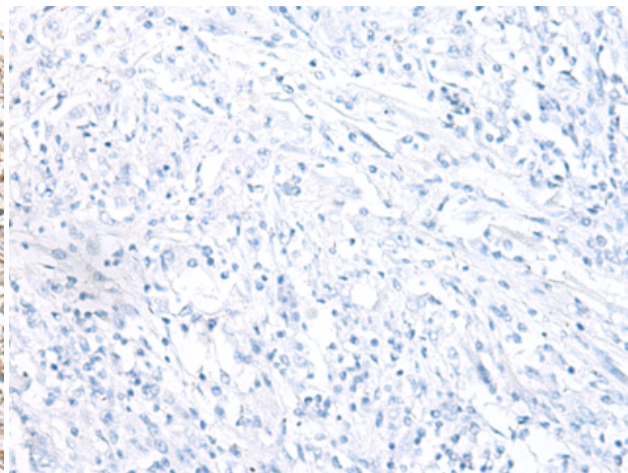
Constituents: PBS (without Mg²⁺ and Ca²⁺), pH 7.4, 150 mM NaCl, 0.05% Sodium Azide and 40% glycerol

Research Areas: Immunology

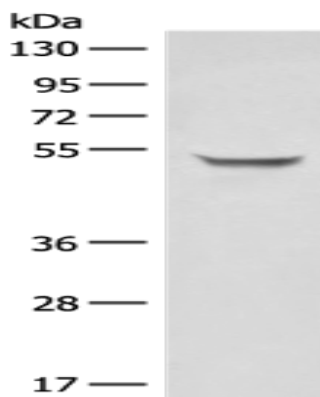
Storage & Shipping: Store at -20°C. Avoid repeated freezing and thawing



Immunohistochemistry analysis of paraffin embedded Human liver cancer tissue using 220437(SIGLEC6 Antibody) at a dilution of 1/75(Secreted and Cell membrane).



In comparison with the IHC on the left, the same paraffin-embedded Human liver cancer tissue is first treated with the synthetic peptide and then with 220437(Anti-SIGLEC6 Antibody) at dilution 1/75.



Gel: 8%SDS-PAGE, Lysate: 40 μ g;
Lane: Human plasma solution;
Primary antibody: 220437(SIGLEC6 Antibody)
at dilution 1/200;
Secondary antibody: Goat anti rabbit IgG at
1/8000 dilution;
Exposure time: 40 seconds