

## SIGLEC15 RABBIT PAB

**Cat.#:** S220912

**Product Name:** Anti-SIGLEC15 Rabbit Polyclonal Antibody

**Synonyms:** CD33L3; HsT1361; SIGLEC-15

**UNIPROT ID:** Q6ZMC9 (Gene Accession - NP\_998767 )

**Background:** Predicted to be involved in regulation of actin cytoskeleton organization; regulation of bone resorption; and regulation of osteoclast development. Predicted to be integral component of membrane. Predicted to be part of protein-containing complex. Predicted to be active in plasma membrane.

**Immunogen:** Synthetic peptide of human SIGLEC15

**Applications:** ELISA, IHC

**Recommended Dilutions:** IHC: 50-200; ELISA: 5000-10000

**Host Species:** Rabbit

**Clonality:** Rabbit Polyclonal

**Isotype:** Immunogen-specific rabbit IgG

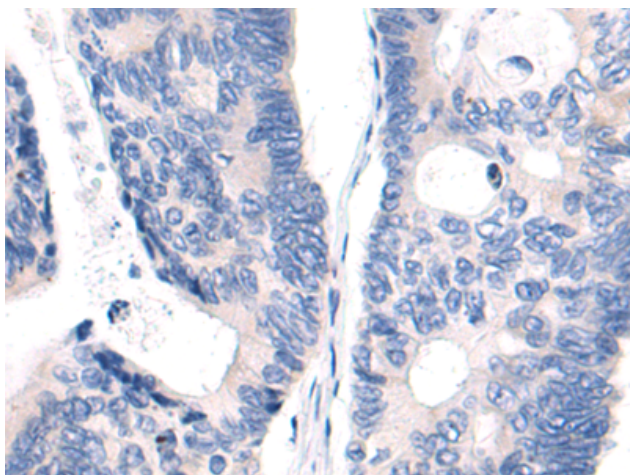
**Purification:** Antigen affinity purification

**Species Reactivity:** Human

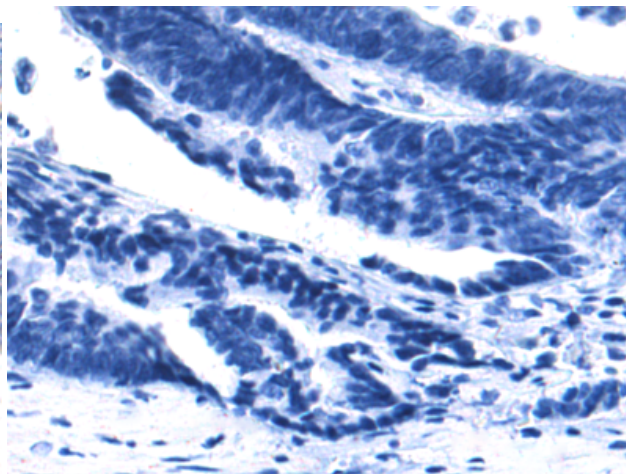
**Constituents:** PBS (without Mg<sup>2+</sup> and Ca<sup>2+</sup>), pH 7.4, 150 mM NaCl, 0.05% Sodium Azide and 40% glycerol

**Research Areas:** Immunology

**Storage & Shipping:** Store at -20°C. Avoid repeated freezing and thawing



Immunohistochemistry analysis of paraffin embedded Human liver cancer tissue using 220912(SIGLEC15 Antibody) at a dilution of 1/50(Cell membrane).



In comparison with the IHC on the left, the same paraffin-embedded Human liver cancer tissue is first treated with the synthetic peptide and then with 220912(Anti-SIGLEC15 Antibody) at dilution 1/50.