

SGSH RABBIT PAB

Cat.#: S222453

Product Name: Anti-SGSH Rabbit Polyclonal Antibody

Synonyms: HSS; SFMD; MPS3A

UNIPROT ID: P51688 (Gene Accession - NP_000190)

Background: This gene encodes the enzyme sulfamidase; one of several enzymes involved in the lysosomal degradation of heparan sulfate. Mutations in this gene are associated with the lysosomal storage disease mucopolysaccharidosis IIIA, also known as Sanfilippo syndrome A, which results from impaired degradation of heparan sulfate. Transcripts of varying sizes have been reported but their biological validity has not been determined.

Immunogen: Synthetic peptide of human SGSH

Applications: ELISA, WB, IHC

Recommended Dilutions: IHC: 50-200;WB: 1000-5000;ELISA: 5000-10000

Host Species: Rabbit

Clonality: Rabbit Polyclonal

Isotype: Immunogen-specific rabbit IgG

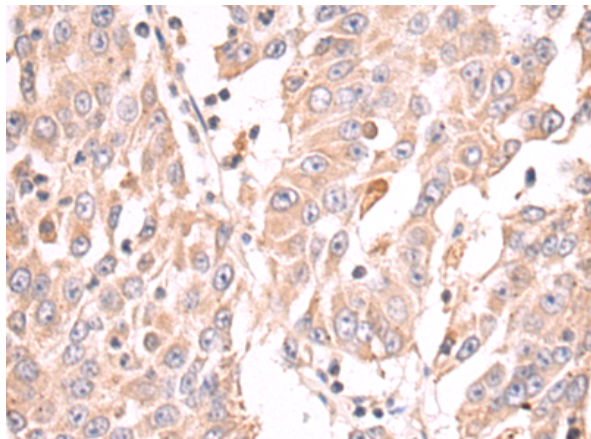
Purification: Antigen affinity purification

Species Reactivity: Human, Mouse

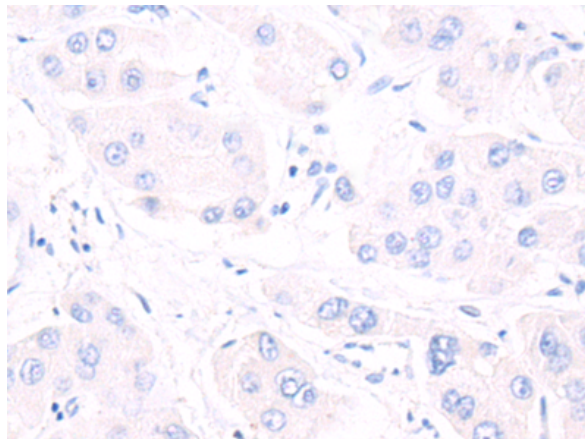
Constituents: PBS (without Mg²⁺ and Ca²⁺), pH 7.4, 150 mM NaCl, 0.05% Sodium Azide and 40% glycerol

Research Areas: Tags & Cell Markers, Neuroscience, Signal Transduction

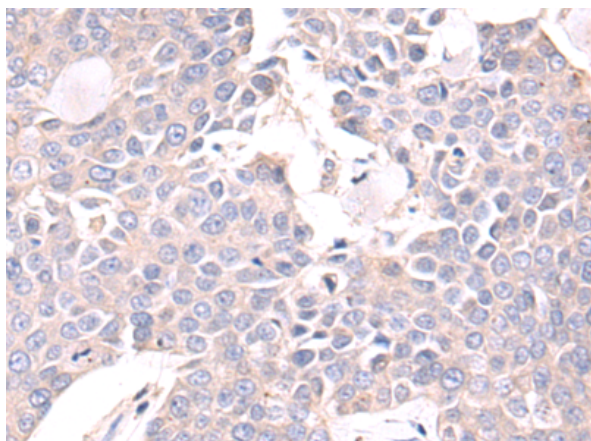
Storage & Shipping: Store at -20°C. Avoid repeated freezing and thawing



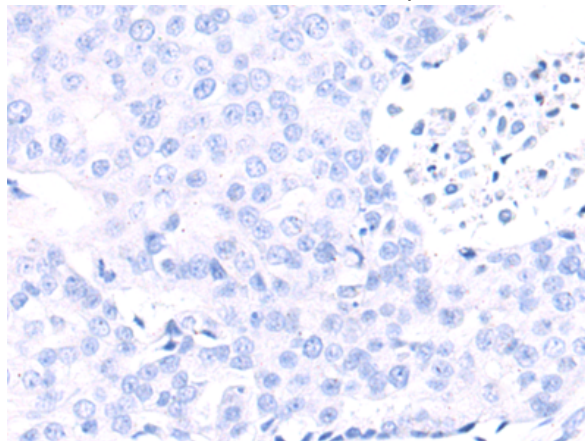
Immunohistochemistry analysis of paraffin embedded Human liver cancer tissue using 222453(SGSH Antibody) at a dilution of 1/50(Cytoplasm).



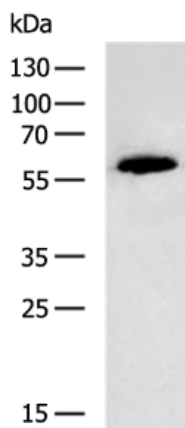
In comparison with the IHC on the left, the same paraffin-embedded Human liver cancer tissue is first treated with the synthetic peptide and then with 222453(Anti-SGSH Antibody) at dilution 1/50.



The image on the left is immunohistochemistry of paraffin-embedded Human breast cancer tissue using 222453(Anti-SGSH Antibody) at a dilution of 1/50.



In comparison with the IHC on the left, the same paraffin-embedded Human breast cancer tissue is first treated with synthetic peptide and then with D264632(Anti-SGSH Antibody) at dilution 1/50.



Gel: 8%SDS-PAGE, Lysate: 40 µg;
Lane: Mouse liver tissue lysate;
Primary antibody: 222453(SGSH Antibody) at dilution 1/1000;
Secondary antibody: HRP-conjugated Goat anti rabbit IgG at 1/5000 dilution;
Exposure time: 7 seconds



Product Description

Pioneering GTPase and Oncogene Product Development since 2010
