

SFTPA1 RABBIT PAB

Cat.#: S217847

Product Name: Anti-SFTPA1 Rabbit Polyclonal Antibody

Synonyms: SPA; ILD1; PSAP; PSPA; SP-A; SPA1; PSP-A; SFTP1; SP-A1; COLEC4; SFTPA1B; SP-A1 beta; SP-A1 delta; SP-A1 gamma; SP-A1 epsilon

UNIPROT ID: Q8IWL2 (Gene Accession - BC111570)

Background: This gene encodes a lung surfactant protein that is a member of a subfamily of C-type lectins called collectins. The encoded protein binds specific carbohydrate moieties found on lipids and on the surface of microorganisms. This protein plays an essential role in surfactant homeostasis and in the defense against respiratory pathogens. Mutations in this gene are associated with idiopathic pulmonary fibrosis. Alternate splicing results in multiple transcript variants. [provided by RefSeq, May 2010]

Immunogen: Fusion protein of human SFTPA1

Applications: ELISA, IHC

Recommended Dilutions: IHC: 100-200; ELISA: 5000-10000

Host Species: Rabbit

Clonality: Rabbit Polyclonal

Isotype: Immunogen-specific rabbit IgG

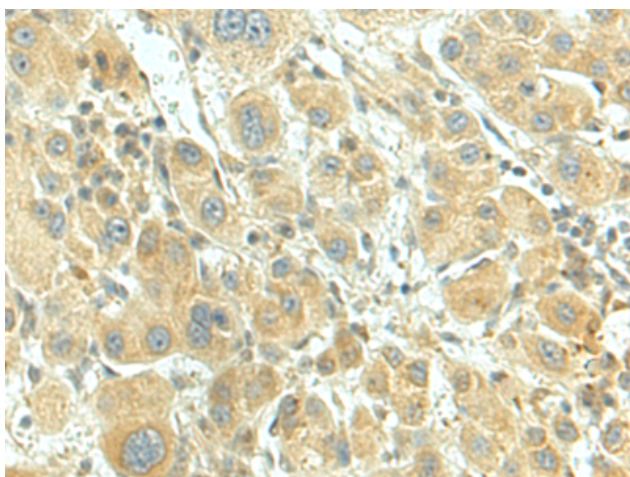
Purification: Antigen affinity purification

Species Reactivity: Human

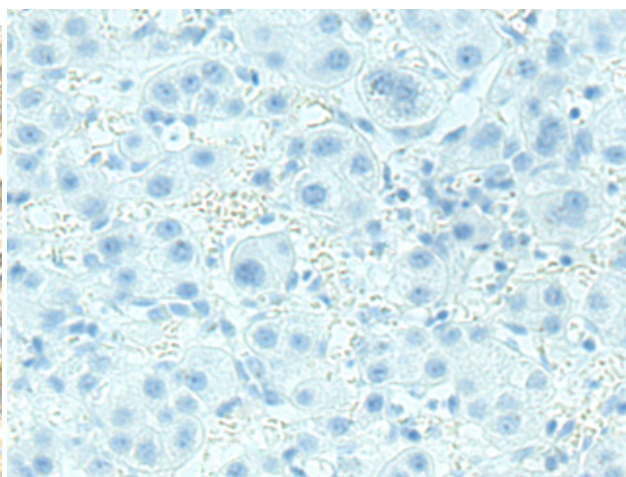
Constituents: PBS (without Mg²⁺ and Ca²⁺), pH 7.4, 150 mM NaCl, 0.05% Sodium Azide and 40% glycerol

Research Areas: Signal Transduction

Storage & Shipping: Store at -20°C. Avoid repeated freezing and thawing



Immunohistochemistry analysis of paraffin embedded Human liver cancer tissue using 217847(SFTPA1 Antibody) at a dilution of 1/120(Cytoplasm).



In comparison with the IHC on the left, the same paraffin-embedded Human liver cancer tissue is first treated with the fusion protein and then with 217847(Anti-SFTPA1 Antibody) at dilution 1/120.