

SFR1 RABBIT PAB

Cat.#: S215395

Product Name: Anti-SFR1 Rabbit Polyclonal Antibody

Synonyms: MEI5; MEIR5; C10orf78; bA373N18.1

UNIPROT ID: Q86XK3 (Gene Accession - NP_001002759)

Background: Component of the SWI5-SFR1 complex, a complex required for double-strand break repair via homologous recombination (PubMed:21252223). Acts as a transcriptional modulator for ESRI (PubMed:23874500).

Immunogen: Synthetic peptide of human SFR1

Applications: ELISA, IHC

Recommended Dilutions: IHC: 20-100; ELISA: 5000-10000

Host Species: Rabbit

Clonality: Rabbit Polyclonal

Isotype: Immunogen-specific rabbit IgG

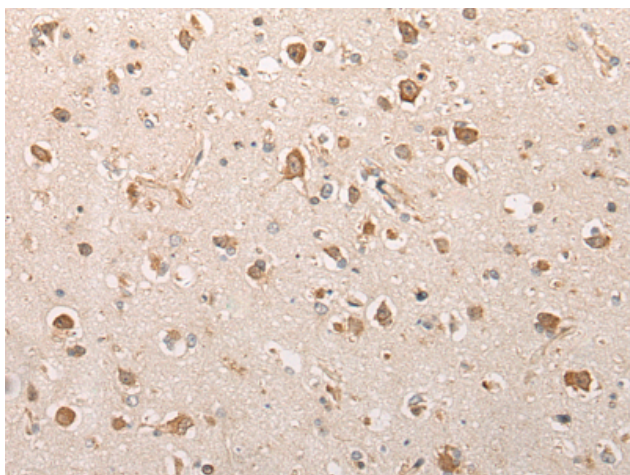
Purification: Antigen affinity purification

Species Reactivity: Human, Mouse, Rat

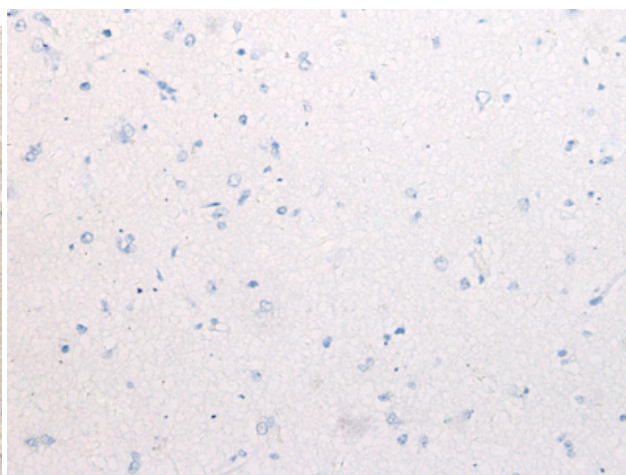
Constituents: PBS (without Mg²⁺ and Ca²⁺), pH 7.4, 150 mM NaCl, 0.05% Sodium Azide and 40% glycerol

Research Areas: Epigenetics and Nuclear Signaling

Storage & Shipping: Store at -20°C. Avoid repeated freezing and thawing



Immunohistochemistry analysis of paraffin embedded Human brain tissue using 215395(SFR1 Antibody) at a dilution of 1/30(Nucleus).



In comparison with the IHC on the left, the same paraffin-embedded Human brain tissue is first treated with the synthetic peptide and then with 215395(Anti-SFR1 Antibody) at dilution 1/30.