

## SF2 RABBIT MAB

**Cat.#:** N262887

**Product Name:** Anti-SF2 Rabbit Monoclonal Antibody

**Synonyms:** ASF; SF2; SFRS1; SF2p33; SRp30a

**UNIPROT ID:** Q07955

**Background:** Plays a role in preventing exon skipping, ensuring the accuracy of splicing and regulating alternative splicing. Interacts with other spliceosomal components, via the RS domains, to form a bridge between the 5'- and 3'-splice site binding components, U1 snRNP and U2AF.

**Immunogen:** A synthetic peptide of human SF2

**Applications:** WB,IHC-F,IHC-P,ICC/IF

**Recommended Dilutions:** WB: 1/500-1/1000 IHC: 1/50-1/100 IF: 1/50-1/200

**Host Species:** Rabbit

**Clonality:** Rabbit Monoclonal

**Clone ID:** R07-9G7

**MW:** Calculated MW: 28 kDa; Observed MW: 28 kDa

**Isotype:** IgG

**Purification:** Affinity Purified

**Species Reactivity:** Human,Mouse,Rat

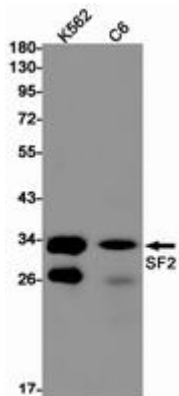
**Conjugation:** Unconjugated

**Modification:** Unmodified

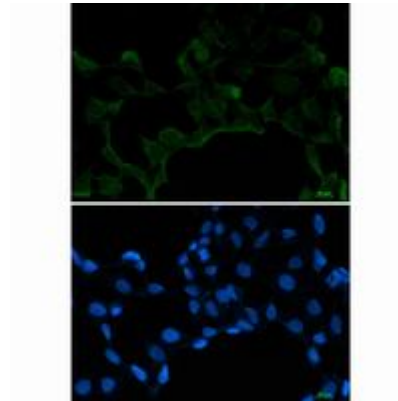
**Constituents:** PBS (without Mg<sup>2+</sup> and Ca<sup>2+</sup>), pH 7.3 containing 50% glycerol, 0.5% BSA and 0.02% sodium azide

**Research Areas:** Epigenetics and Nuclear Signaling

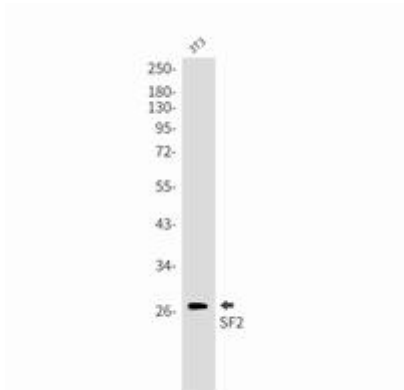
**Storage & Shipping:** Store at -20°C. Avoid repeated freezing and thawing



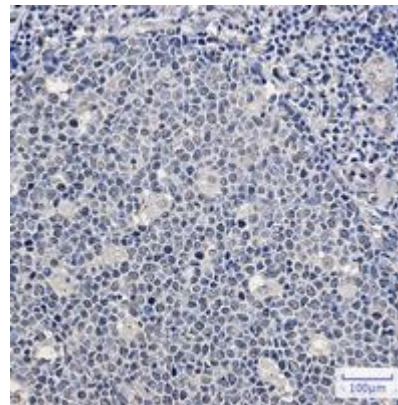
Western blot analysis of SF2 in K562, C6 lysates using SF2 antibody



Immunocytochemistry analysis of SF2 (green) in 293T using SF2 antibody, and DAPI (blue).



Western blot analysis of SF2 in 3T3 lysates using SF2 antibody.



Immunohistochemistry analysis of paraffin-embedded Human tonsil using SF2 antibody. High-pressure and temperature Sodium Citrate pH 6.0 was used for antigen retrieval.