

SEZ6L RABBIT PAB

Cat.#: S220903

Product Name: Anti-SEZ6L Rabbit Polyclonal Antibody

Synonyms:

UNIPROT ID: Q9BYHI (Gene Accession - NP_066938)

Background: Predicted to act upstream of or within adult locomotory behavior; nervous system development; and regulation of protein kinase C signaling. Predicted to be located in endoplasmic reticulum and neuronal cell body.

Immunogen: Synthetic peptide of human SEZ6L

Applications: ELISA, WB, IHC

Recommended Dilutions: IHC: 50-200;WB: 1000-5000;ELISA: 5000-10000

Host Species: Rabbit

Clonality: Rabbit Polyclonal

Isotype: Immunogen-specific rabbit IgG

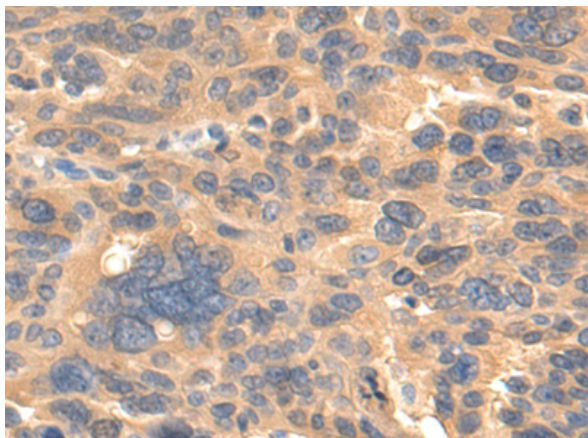
Purification: Antigen affinity purification

Species Reactivity: Human, Mouse

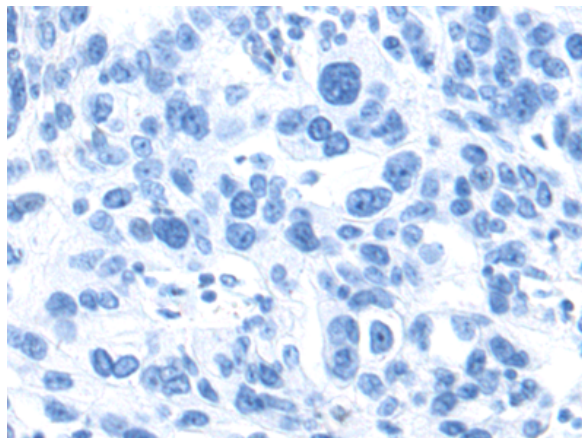
Constituents: PBS (without Mg²⁺ and Ca²⁺), pH 7.4, 150 mM NaCl, 0.05% Sodium Azide and 40% glycerol

Research Areas: Cancer, Neuroscience

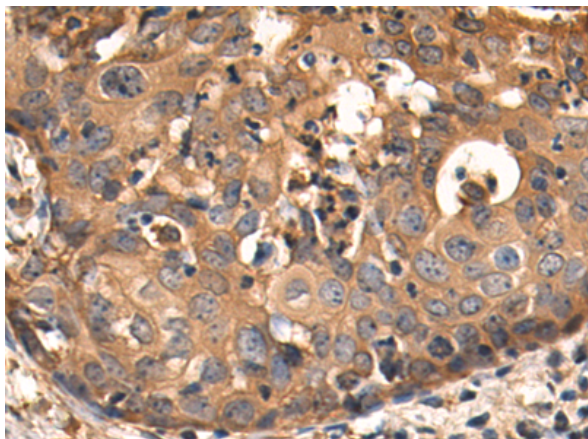
Storage & Shipping: Store at -20°C. Avoid repeated freezing and thawing



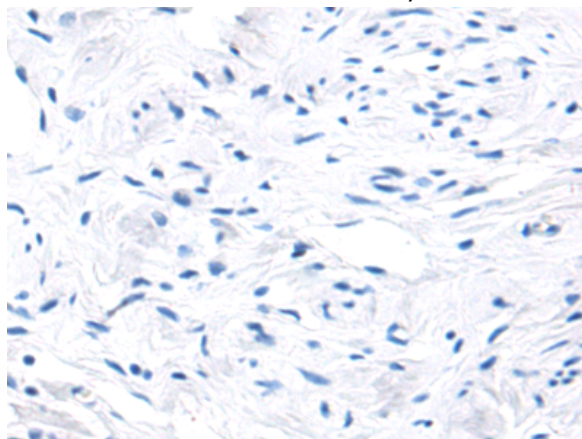
Immunohistochemistry analysis of paraffin embedded Human breast cancer tissue using 220903(SEZ6L Antibody) at a dilution of 1/50(Cytoplasm).



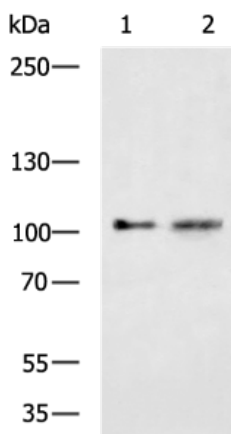
In comparison with the IHC on the left, the same paraffin-embedded Human breast cancer tissue is first treated with the synthetic peptide and then with 220903(Anti-SEZ6L Antibody) at dilution 1/50.



The image on the left is immunohistochemistry of paraffin-embedded Human cervical cancer tissue using 220903(Anti-SEZ6L Antibody) at a dilution of 1/50.



In comparison with the IHC on the left, the same paraffin-embedded Human cervical cancer tissue is first treated with synthetic peptide and then with D262196(Anti-SEZ6L Antibody) at dilution 1/50.



Gel: 6%SDS-PAGE, Lysate: 40 µg;
Lane 1-2: Hela and RAMOS cell lysates;
Primary antibody: 220903(SEZ6L Antibody) at dilution 1/1000;
Secondary antibody: HRP-conjugated Goat anti rabbit IgG at 1/5000 dilution;
Exposure time: 1 minute



Product Description

Pioneering GTPase and Oncogene Product Development since 2010
