

SETD7 RABBIT PAB

Cat.#: S217505

Product Name: Anti-SETD7 Rabbit Polyclonal Antibody

Synonyms: KMT7; SET7; SET9; SET7/9

UNIPROT ID: Q8WTS6 (Gene Accession - BC121055)

Background: The methylation of histones plays a pivotal role in the regulation of chromatin structure and gene expression. Histone methylation can occur on Arg or Lys residues, with an exquisite site selectivity for Lys methylation at specific positions in the N-termini of histones H3 and H4. SET7/9, a histone methyltransferase (HMTase), which transfers methyl groups to Lys4 of histone H3, forms a complex with S-adenosyl-L-methionine. This complex contains an active site consisting of a binding pocket where an AdoMet molecule in an unusual conformation binds, a narrow substrate-specific channel that only unmethylated lysine residues can access and a catalytic tyrosine residue.

Immunogen: Fusion protein of human SETD7

Applications: ELISA, IHC

Recommended Dilutions: IHC: 50-200; ELISA: 2000-5000

Host Species: Rabbit

Clonality: Rabbit Polyclonal

Isotype: Immunogen-specific rabbit IgG

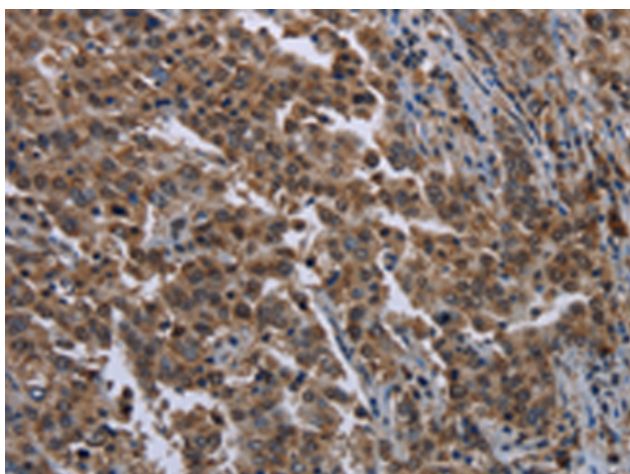
Purification: Antigen affinity purification

Species Reactivity: Human, Mouse

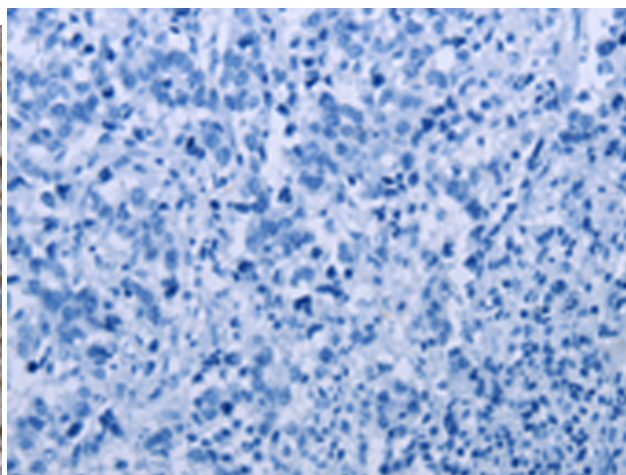
Constituents: PBS (without Mg²⁺ and Ca²⁺), pH 7.4, 150 mM NaCl, 0.05% Sodium Azide and 40% glycerol

Research Areas: Epigenetics and Nuclear Signaling

Storage & Shipping: Store at -20°C. Avoid repeated freezing and thawing



Immunohistochemistry analysis of paraffin embedded Human liver cancer tissue using 217505(SETD7 Antibody) at a dilution of 1/20(Nucleus and Cytoplasm).



In comparison with the IHC on the left, the same paraffin-embedded Human liver cancer tissue is first treated with the fusion protein and then with 217505(Anti-SETD7 Antibody) at dilution 1/20.



Product Description

Pioneering GTPase and Oncogene Product Development since 2010
