

SET RABBIT PAB

Cat.#: N225962

Product Name: Anti-SET Rabbit pAb

Synonyms: 2PP2A; IGAAD; TAF-I; I2PP2A; IPP2A2; PHAPII; TAF-IBETA

UNIPROT ID: Q01105

Background: Multitasking protein, involved in apoptosis, transcription, nucleosome assembly and histone binding. Isoform 2 anti-apoptotic activity is mediated by inhibition of the GZMA-activated DNase, NME1.

Immunogen: A synthesized peptide derived from human SET

Applications: WB,IHC-P,ICC/IF,IP,FC

Recommended Dilutions: WB: 1/500-1/1000 IHC: 1/50-1/100 IF: 1/50-1/200 IP: 1/20 FC: 1/50-1/100

Host Species: Rabbit

Clonality: Rabbit Polyclonal

Clone ID: -

MW: Calculated MW: 33 kDa; Observed MW: 39 kDa

Isotype: IgG

Purification: Affinity Chromatography

Species Reactivity: Human,Mouse,Rat

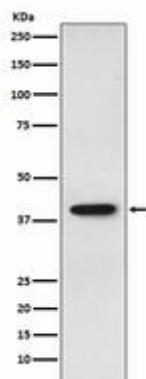
Conjugation: Unconjugated

Modification: Unmodified

Constituents: PBS (without Mg²⁺ and Ca²⁺), pH 7.3 containing 50% glycerol, 0.5% BSA and 0.02% sodium azide

Research Areas: Immunology

Storage & Shipping: Store at -20°C. Avoid repeated freezing and thawing



Western blot analysis of SET in HepG2 lysates using SET antibody.



Product Description

Pioneering GTPase and Oncogene Product Development since 2010
