

## SET RABBIT MAB

**Cat.#:** N262886

**Product Name:** Anti-SET Rabbit Monoclonal Antibody

**Synonyms:** 2PP2A; IGAAD; TAF-I; I2PP2A; IPP2A2; PHAPII; TAF-IBETA

**UNIPROT ID:** Q01105

**Background:** Multitasking protein, involved in apoptosis, transcription, nucleosome assembly and histone binding. Isoform 2 anti-apoptotic activity is mediated by inhibition of the GZMA-activated DNase, NME1.

**Immunogen:** A synthetic peptide of human SET

**Applications:** WB,IHC-F,IHC-P,ICC/IF,IP

**Recommended Dilutions:** WB: 1/500-1/1000 IHC: 1/50-1/100 IF: 1/50-1/200 IP: 1/20

**Host Species:** Rabbit

**Clonality:** Rabbit Monoclonal

**Clone ID:** R04-5E8

**MW:** Calculated MW: 33 kDa; Observed MW: 39 kDa

**Isotype:** IgG

**Purification:** Affinity Purified

**Species Reactivity:** Human

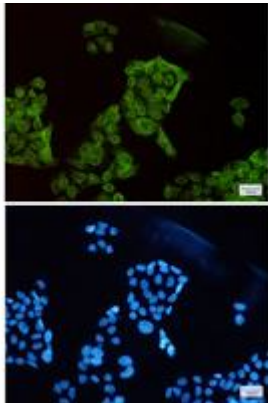
**Conjugation:** Unconjugated

**Modification:** Unmodified

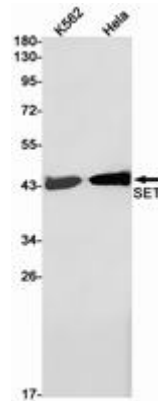
**Constituents:** PBS (without Mg<sup>2+</sup> and Ca<sup>2+</sup>), pH 7.3 containing 50% glycerol, 0.5% BSA and 0.02% sodium azide

**Research Areas:** Immunology

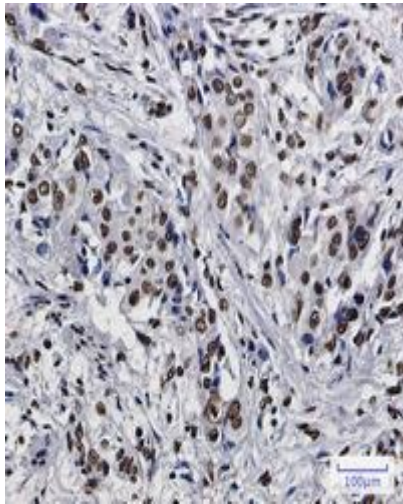
**Storage & Shipping:** Store at -20°C. Avoid repeated freezing and thawing



Immunocytochemistry analysis of SET (green) in HeLa using SET antibody, and DAPI (blue)



Western blot analysis of SET in K562, HeLa lysates using SET antibody.



Immunohistochemistry analysis of paraffin-embedded Human lung cancer using SET antibody. High-pressure and temperature Sodium Citrate pH 6.0 was used for antigen retrieval.