

SESTD1 RABBIT PAB

Cat.#: S219576

Product Name: Anti-SESTD1 Rabbit Polyclonal Antibody

Synonyms: SOLO

UNIPROT ID: Q86VW0 (Gene Accession - BC047578)

Background: Enables phosphatidylinositol-3,4-bisphosphate binding activity and phospholipid binding activity. Involved in negative regulation of calcium ion transmembrane transport via high voltage-gated calcium channel. Located in intermediate filament cytoskeleton. Colocalizes with calcium channel complex.

Immunogen: Fusion protein of human SESTD1

Applications: ELISA, IHC

Recommended Dilutions: IHC: 50-200; ELISA: 5000-10000

Host Species: Rabbit

Clonality: Rabbit Polyclonal

Isotype: Immunogen-specific rabbit IgG

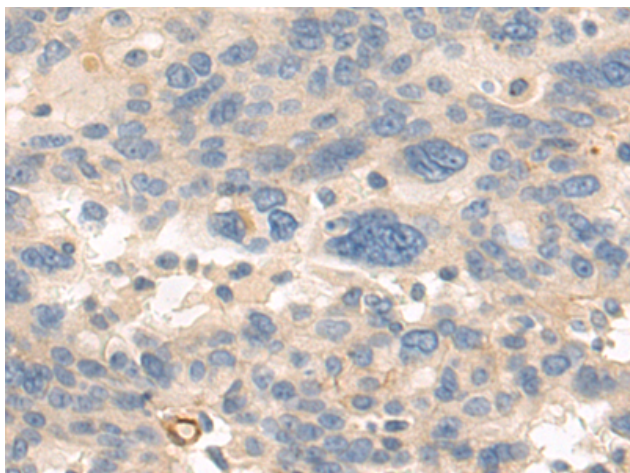
Purification: Antigen affinity purification

Species Reactivity: Human, Mouse

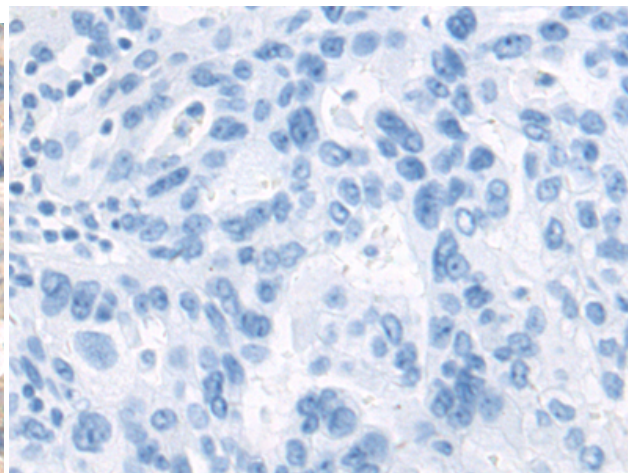
Constituents: PBS (without Mg²⁺ and Ca²⁺), pH 7.4, 150 mM NaCl, 0.05% Sodium Azide and 40% glycerol

Research Areas: Signal Transduction, Metabolism

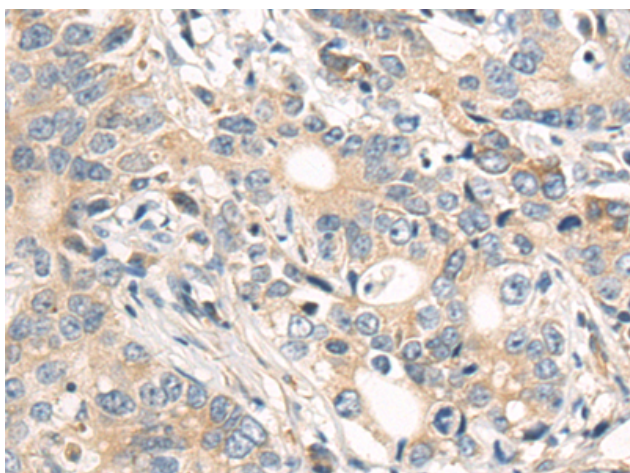
Storage & Shipping: Store at -20°C. Avoid repeated freezing and thawing



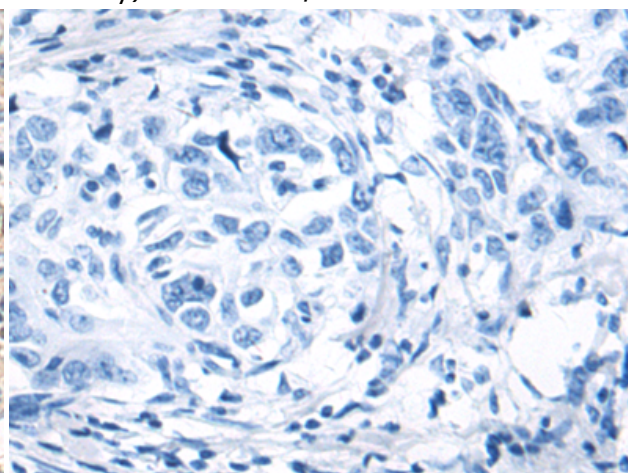
Immunohistochemistry analysis of paraffin embedded Human breast cancer tissue using 219576 (SESTD1 Antibody) at a dilution of 1/70 (Cytoplasm).



In comparison with the IHC on the left, the same paraffin-embedded Human breast cancer tissue is first treated with the fusion protein and then with 219576 (Anti-SESTD1 Antibody) at dilution 1/70.



The image on the left is immunohistochemistry of paraffin-embedded Human gastric cancer tissue using 219576 (Anti-SESTD1 Antibody) at a dilution of 1/70.



In comparison with the IHC on the left, the same paraffin-embedded Human gastric cancer tissue is first treated with fusion protein and then with D227825 (Anti-SESTD1 Antibody) at dilution 1/70.