

## SERPINB2 RABBIT PAB

**Cat.#:** S217668

**Product Name:** Anti-SERPINB2 Rabbit Polyclonal Antibody

**Synonyms:** PAI; PAI2; PAI-2; PLANH2; HsT1201

**UNIPROT ID:** P05120 (Gene Accession - BC012609 )

**Background:** Plasminogen activator inhibitor-2 (placental PAI) is a coagulation factor that inactivates tPA and urokinase. It is present in most cells, especially monocytes/macrophages. PAI-2 exists in two forms, a 60-kDa extracellular glycosylated form and a 43-kDa intracellular form. It is present only at detectable quantities in blood during pregnancy, as it is produced by the placenta, and may explain partially the increased rate of thrombosis during pregnancy.

**Immunogen:** Fusion protein of human SERPINB2

**Applications:** ELISA, IHC

**Recommended Dilutions:** IHC: 25-100; ELISA: 1000-2000

**Host Species:** Rabbit

**Clonality:** Rabbit Polyclonal

**Isotype:** Immunogen-specific rabbit IgG

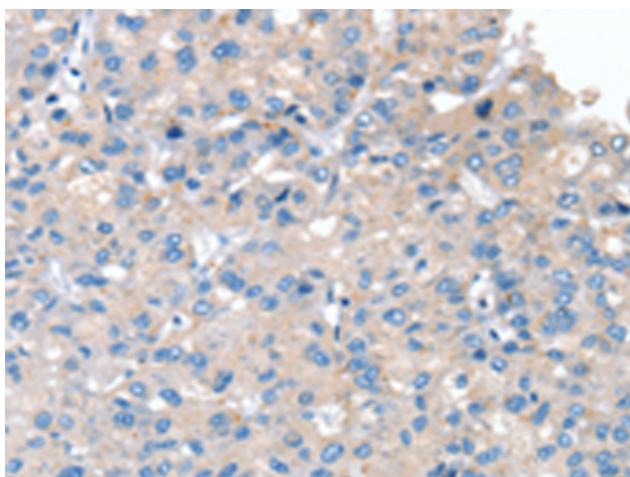
**Purification:** Antigen affinity purification

**Species Reactivity:** Human, Mouse

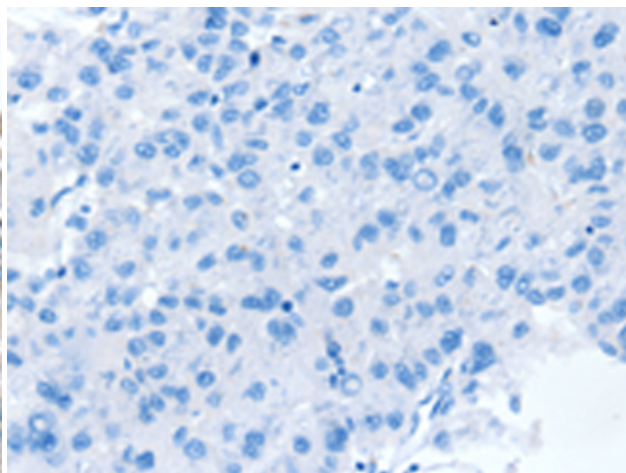
**Constituents:** PBS (without Mg<sup>2+</sup> and Ca<sup>2+</sup>), pH 7.4, 150 mM NaCl, 0.05% Sodium Azide and 40% glycerol

**Research Areas:** Cell Biology, Immunology

**Storage & Shipping:** Store at -20°C. Avoid repeated freezing and thawing



Immunohistochemistry analysis of paraffin embedded Human liver cancer tissue using 217668(SERPINB2 Antibody) at a dilution of 1/20(Secreted).



In comparison with the IHC on the left, the same paraffin-embedded Human liver cancer tissue is first treated with the fusion protein and then with 217668(Anti-SERPINB2 Antibody) at dilution 1/20.