

SERPINB11 RABBIT PAB

Cat.#: S217810

Product Name: Anti-SERPINB11 Rabbit Polyclonal Antibody

Synonyms: EPIPIN; SERPIN11

UNIPROT ID: Q96P15 (Gene Accession - BC069596)

Background: SerpinB11 (serpin peptidase inhibitor, clade B (ovalbumin), member 11), also known as EPIPIN or SERPIN11, is a 392 amino acid cytoplasmic protein that belongs to the Ov-serpin subfamily and serpin family. Like other members of the serpin family, SerpinB11 has been identified as a noninhibitory intracellular protein. The gene encoding SerpinB11 maps to human chromosome 18, which houses over 300 protein-coding genes and contains nearly 76 million bases. There are a variety of diseases associated with defects in chromosome 18-localized genes, some of which include Trisomy 18 (also known as Edwards syndrome), Niemann-Pick disease, hereditary hemorrhagic telangiectasia, erythropoietic protoporphyria and follicular lymphomas.

Immunogen: Fusion protein of human SERPINB11

Applications: ELISA, WB, IHC

Recommended Dilutions: IHC: Oct-50;WB: 500-2000;ELISA: 2000-5000

Host Species: Rabbit

Clonality: Rabbit Polyclonal

Isotype: Immunogen-specific rabbit IgG

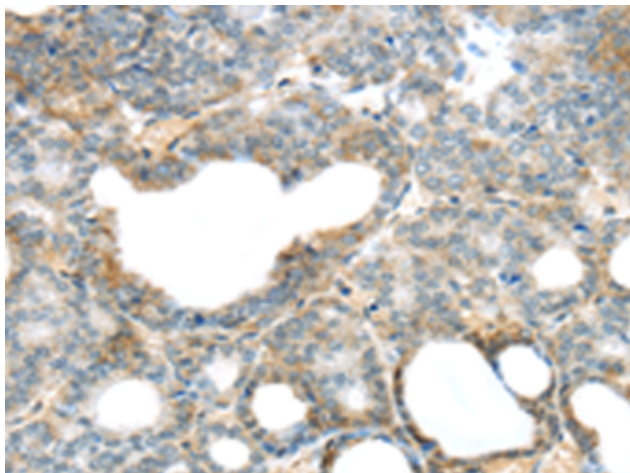
Purification: Antigen affinity purification

Species Reactivity: Human, Mouse

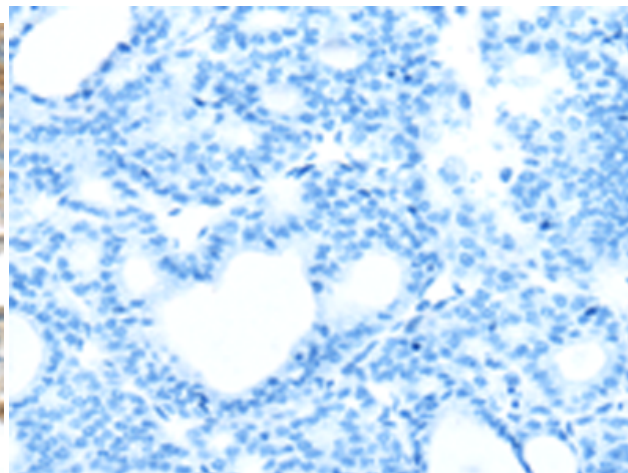
Constituents: PBS (without Mg²⁺ and Ca²⁺), pH 7.4, 150 mM NaCl, 0.05% Sodium Azide and 40% glycerol

Research Areas: Cell Biology

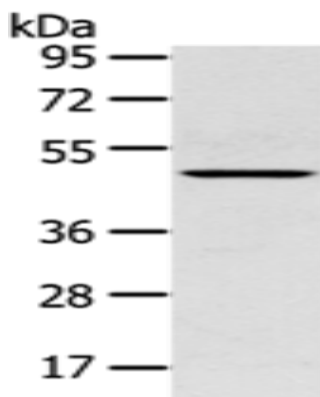
Storage & Shipping: Store at -20°C. Avoid repeated freezing and thawing



Immunohistochemistry analysis of paraffin embedded Human thyroid cancer tissue using 217810(SERPINB11 Antibody) at a dilution of 1/20(Cytoplasm).



In comparison with the IHC on the left, the same paraffin-embedded Human thyroid cancer tissue is first treated with the fusion protein and then with 217810(Anti-SERPINB11 Antibody) at dilution 1/20.



Gel: 8%SDS-PAGE, Lysate: 40 μ g;
Lane: Mouse lung tissue;
Primary antibody: 217810(SERPINB11 Antibody) at dilution 1/400;
Secondary antibody: Goat anti rabbit IgG at 1/8000 dilution;
Exposure time: 30 seconds