

## SERPINA3 RABBIT PAB

**Cat.#:** S213332

**Product Name:** Anti-SERPINA3 Rabbit Polyclonal Antibody

**Synonyms:** ACT; AACT; GIG24; GIG25

**UNIPROT ID:** P01011 (Gene Accession - NP\_001076 )

**Background:** The protein encoded by this gene is a plasma protease inhibitor and member of the serine protease inhibitor class. Polymorphisms in this protein appear to be tissue specific and influence protease targeting. Variations in this protein's sequence have been implicated in Alzheimer's disease, and deficiency of this protein has been associated with liver disease. Mutations have been identified in patients with Parkinson disease and chronic obstructive pulmonary disease.

**Immunogen:** Synthetic peptide of human SERPINA3

**Applications:** ELISA, WB, IHC

**Recommended Dilutions:** IHC: 25-50;WB: 200-1000;ELISA: 5000-10000

**Host Species:** Rabbit

**Clonality:** Rabbit Polyclonal

**Isotype:** Immunogen-specific rabbit IgG

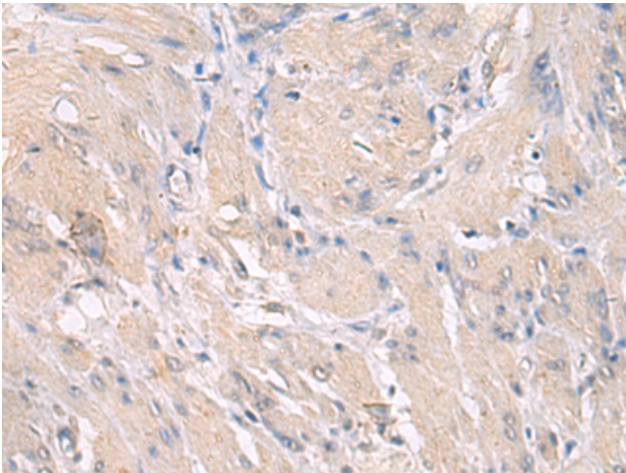
**Purification:** Antigen affinity purification

**Species Reactivity:** Human

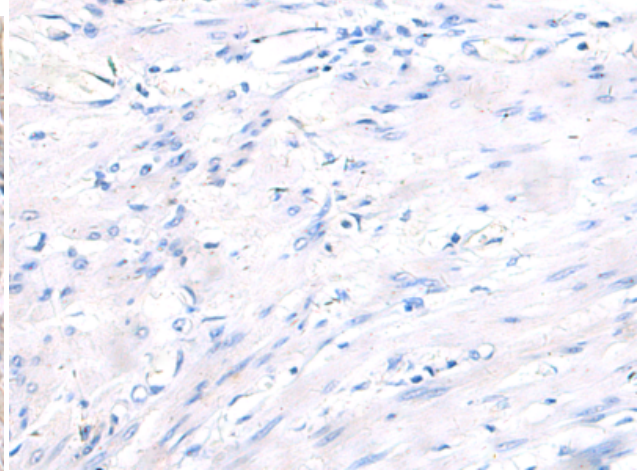
**Constituents:** PBS (without Mg<sup>2+</sup> and Ca<sup>2+</sup>), pH 7.4, 150 mM NaCl, 0.05% Sodium Azide and 40% glycerol

**Research Areas:** Cell Biology, Neuroscience, Cardiovascular

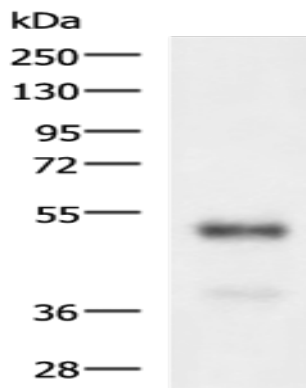
**Storage & Shipping:** Store at -20°C. Avoid repeated freezing and thawing



Immunohistochemistry analysis of paraffin embedded Human gastric cancer tissue using 213332 (SERPINA3 Antibody) at a dilution of 1/30 (Secreted).



In comparison with the IHC on the left, the same paraffin-embedded Human gastric cancer tissue is first treated with the synthetic peptide and then with 213332 (Anti-SERPINA3 Antibody) at dilution 1/30.



Gel: 8% SDS-PAGE, Lysate: 40  $\mu$ g;  
Lane: Human colorectal cancer tissue lysate;  
Primary antibody: 213332 (SERPINA3 Antibody) at dilution 1/400;  
Secondary antibody: HRP-conjugated Goat anti rabbit IgG at 1/5000 dilution;  
Exposure time: 3 minutes