

SERPINA12 RABBIT PAB

Cat.#: S217806

Product Name: Anti-SERPINA12 Rabbit Polyclonal Antibody

Synonyms: OL-64

UNIPROT ID: Q8IW75 (Gene Accession - BC040857)

Background: Predicted to enable serine-type endopeptidase inhibitor activity. Predicted to be involved in negative regulation of endopeptidase activity. Predicted to act upstream of or within negative regulation of gluconeogenesis; positive regulation of signal transduction; and regulation of lipid metabolic process. Predicted to be located in plasma membrane. Predicted to be active in extracellular space. [provided by Alliance of Genome Resources, Apr 2022]

Immunogen: Fusion protein of human SERPINA12

Applications: ELISA, IHC

Recommended Dilutions: IHC: 50-200; ELISA: 5000-10000

Host Species: Rabbit

Clonality: Rabbit Polyclonal

Isotype: Immunogen-specific rabbit IgG

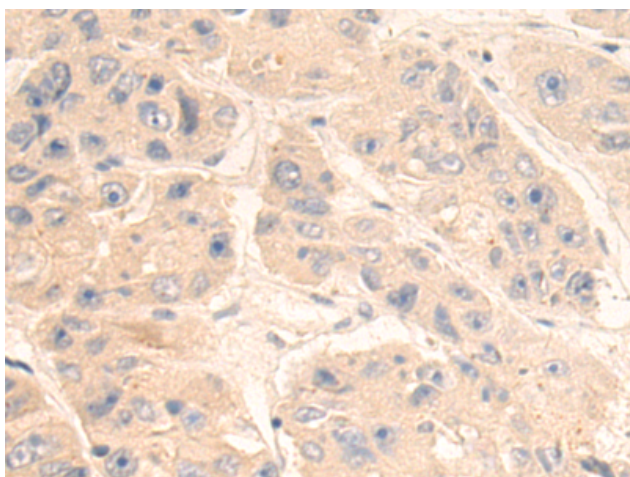
Purification: Antigen affinity purification

Species Reactivity: Human

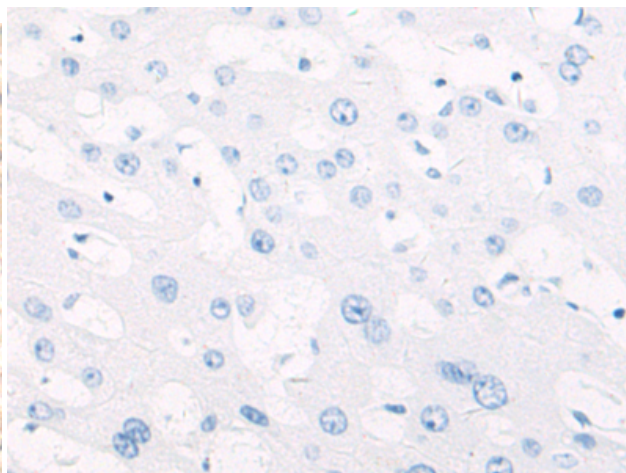
Constituents: PBS (without Mg²⁺ and Ca²⁺), pH 7.4, 150 mM NaCl, 0.05% Sodium Azide and 40% glycerol

Research Areas: Signal Transduction, Metabolism, Cell Biology, Neuroscience, Cardiovascular

Storage & Shipping: Store at -20°C. Avoid repeated freezing and thawing



Immunohistochemistry analysis of paraffin embedded Human liver cancer tissue using 217806(SERPINA12 Antibody) at a dilution of 1/80(Secreted).



In comparison with the IHC on the left, the same paraffin-embedded Human liver cancer tissue is first treated with the fusion protein and then with 217806(Anti-SERPINA12 Antibody) at dilution 1/80.