

## SERINE RACEMASE RABBIT MAB

**Cat.#:** N263545

**Product Name:** Anti-Serine Racemase Rabbit Monoclonal Antibody

**Synonyms:** ILV1; ISO1

**UNIPROT ID:** Q9GZT4

**Background:** Catalyzes the synthesis of D-serine from L-serine.

**Immunogen:** A synthetic peptide of human Serine racemase

**Applications:** WB,IP

**Recommended Dilutions:** WB: 1/500-1/1000 IP: 1/20

**Host Species:** Rabbit

**Clonality:** Rabbit Monoclonal

**Clone ID:** R03-1G5

**MW:** Calculated MW: 37 kDa; Observed MW: 37 kDa

**Isotype:** IgG

**Purification:** Affinity Purified

**Species Reactivity:** Human

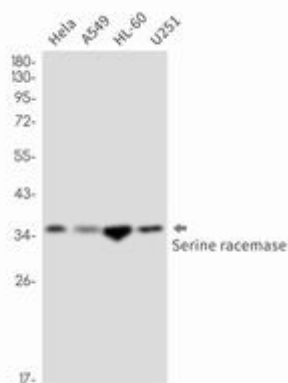
**Conjugation:** Unconjugated

**Modification:** Unmodified

**Constituents:** PBS (without Mg<sup>2+</sup> and Ca<sup>2+</sup>), pH 7.3 containing 50% glycerol, 0.5% BSA and 0.02% sodium azide

**Research Areas:** -

**Storage & Shipping:** Store at -20°C. Avoid repeated freezing and thawing



Western blot analysis of Serine racemase in HeLa, A549, HL-60, U251 lysates using Serine Racemase antibody.