

## SERINC2 RABBIT PAB

**Cat.#:** S220899

**Product Name:** Anti-SERINC2 Rabbit Polyclonal Antibody

**Synonyms:** TDE2; TDE2L; FKSG84; PRO0899

**UNIPROT ID:** Q96SA4 (Gene Accession - NP\_849196 )

**Background:** SERINC2 involved in phosphatidylserine metabolic process, and positive regulation of transferase activity.

**Immunogen:** Synthetic peptide of human SERINC2

**Applications:** ELISA, WB, IHC

**Recommended Dilutions:** IHC: 25-100;WB: 200-1000;ELISA: 1000-2000

**Host Species:** Rabbit

**Clonality:** Rabbit Polyclonal

**Isotype:** Immunogen-specific rabbit IgG

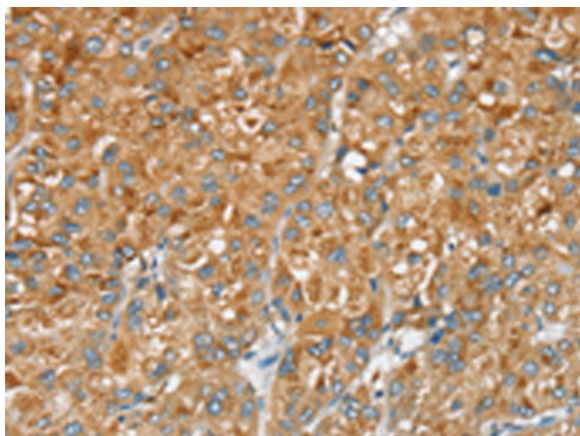
**Purification:** Antigen affinity purification

**Species Reactivity:** Human, Mouse

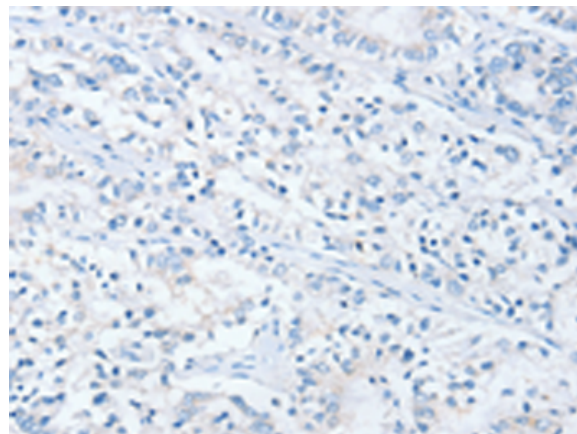
**Constituents:** PBS (without Mg<sup>2+</sup> and Ca<sup>2+</sup>), pH 7.4, 150 mM NaCl, 0.05% Sodium Azide and 40% glycerol

**Research Areas:** Metabolism

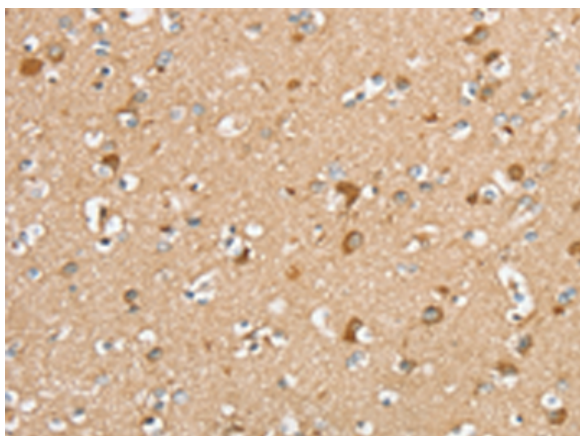
**Storage & Shipping:** Store at -20°C. Avoid repeated freezing and thawing



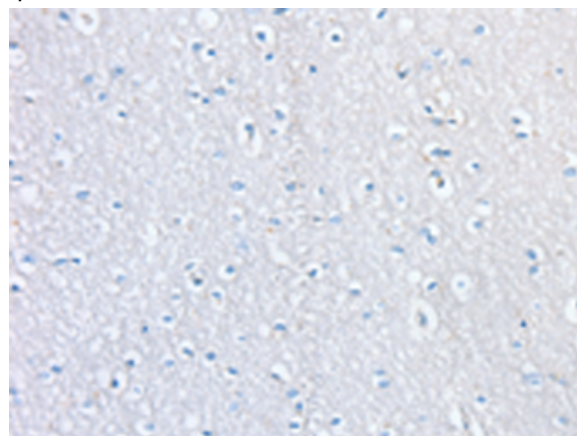
Immunohistochemistry analysis of paraffin embedded Human liver cancer tissue using 220899(SERINC2 Antibody) at a dilution of 1/20(Cytoplasm).



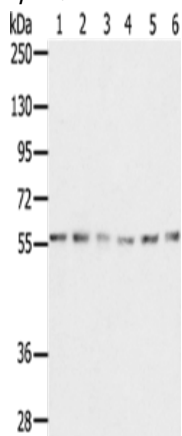
In comparison with the IHC on the left, the same paraffin-embedded Human liver cancer tissue is first treated with the synthetic peptide and then with 220899(Anti-SERINC2 Antibody) at dilution 1/20.



The image on the left is immunohistochemistry of paraffin-embedded Human brain tissue using 220899(Anti-SERINC2 Antibody) at a dilution of 1/20.



In comparison with the IHC on the left, the same paraffin-embedded Human brain tissue is first treated with synthetic peptide and then with D262189(Anti-SERINC2 Antibody) at dilution 1/20.



Gel: 8%SDS-PAGE, Lysate: 40  $\mu$ g;  
 Lane 1-6: K562 cells, NIH/3T3 cells, Jurkat cells, 293T cells, 231 cells, hepg2 cells;  
 Primary antibody: 220899(SERINC2 Antibody) at dilution 1/200;  
 Secondary antibody: Goat anti rabbit IgG at 1/8000 dilution;  
 Exposure time: 1 minute



# Product Description

Pioneering GTPase and Oncogene Product Development since 2010

---