

## SEPTIN10 RABBIT PAB

**Cat.#:** S218719

**Product Name:** Anti-SEPTIN10 Rabbit Polyclonal Antibody

**Synonyms:** 10-Sep

**UNIPROT ID:** Q9P0V9 (Gene Accession - BC020502 )

**Background:** This gene encodes a member of the septin family of cytoskeletal proteins with GTPase activity. This protein localizes to the cytoplasm and nucleus and displays GTP-binding and GTPase activity. A pseudogene for this gene is located on chromosome 8. Alternative splicing results in multiple transcript variants. [provided by RefSeq, Apr 2012]

**Immunogen:** Fusion protein of human SEPTIN10

**Applications:** ELISA, WB, IHC

**Recommended Dilutions:** IHC: 50-300;WB: 200-1000;ELISA: 5000-10000

**Host Species:** Rabbit

**Clonality:** Rabbit Polyclonal

**Isotype:** Immunogen-specific rabbit IgG

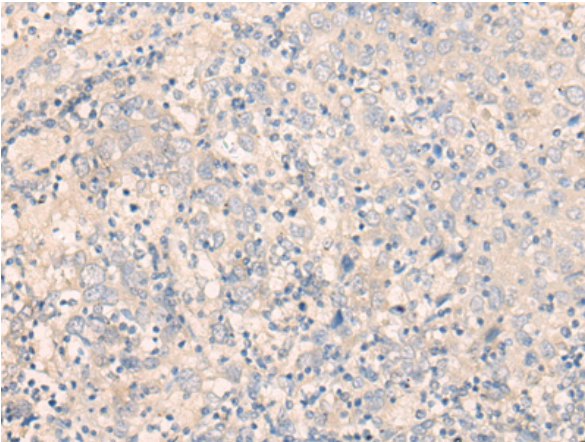
**Purification:** Antigen affinity purification

**Species Reactivity:** Human, Mouse, Rat

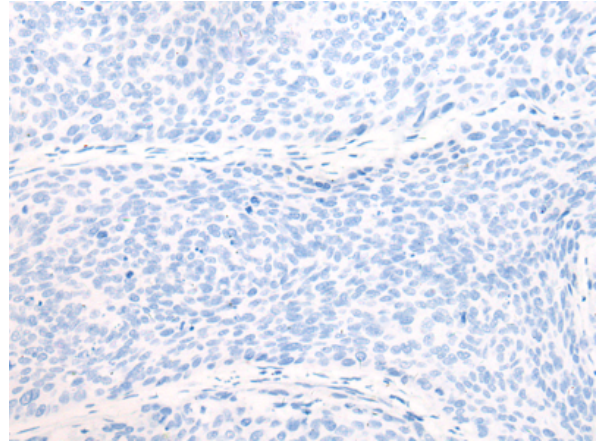
**Constituents:** PBS (without Mg<sup>2+</sup> and Ca<sup>2+</sup>), pH 7.4, 150 mM NaCl, 0.05% Sodium Azide and 40% glycerol

**Research Areas:** Cancer

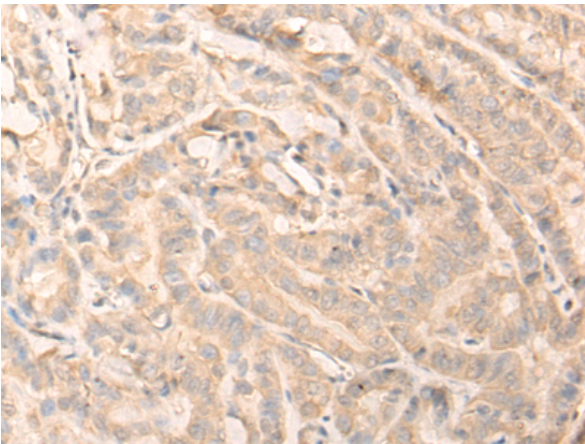
**Storage & Shipping:** Store at -20°C. Avoid repeated freezing and thawing



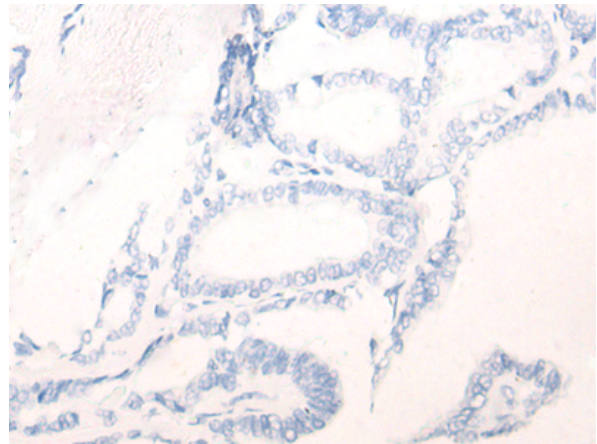
Immunohistochemistry analysis of paraffin embedded Human cervical cancer tissue using 218719(SEPTIN10 Antibody) at a dilution of 1/45(Cytoplasm).



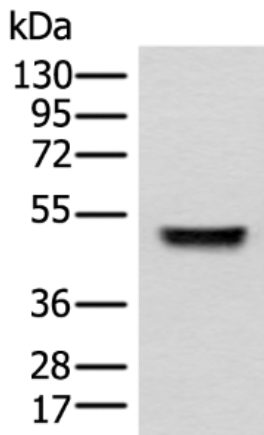
In comparison with the IHC on the left, the same paraffin-embedded Human cervical cancer tissue is first treated with the fusion protein and then with 218719(Anti-SEPTIN10 Antibody) at dilution 1/45.



The image on the left is immunohistochemistry of paraffin-embedded Human thyroid cancer tissue using 218719(Anti-SEPTIN10 Antibody) at a dilution of 1/45.



In comparison with the IHC on the left, the same paraffin-embedded Human thyroid cancer tissue is first treated with fusion protein and then with D225058(Anti-SEPTIN10 Antibody) at dilution 1/45.



Gel: 8%SDS-PAGE, Lysate: 40 µg;  
Lane: Human fetal liver tissue lysate;  
Primary antibody: 218719(SEPTIN10 Antibody) at dilution 1/350;  
Secondary antibody: Goat anti rabbit IgG at 1/8000 dilution;  
Exposure time: 80 seconds



# Product Description

Pioneering GTPase and Oncogene Product Development since 2010

---