

SEPTIN 8 RABBIT MAB

Cat.#: N263544

Product Name: Anti-Septin 8 Rabbit Monoclonal Antibody

Synonyms: SEP2; SEPT8

UNIPROT ID: Q92599

Background: Filament-forming cytoskeletal GTPase (By similarity).

Immunogen: A synthetic peptide of human Septin 8

Applications: WB,IP

Recommended Dilutions: WB: 1/500-1/1000 IP: 1/20

Host Species: Rabbit

Clonality: Rabbit Monoclonal

Clone ID: R05-2C6

MW: Calculated MW: 56 kDa; Observed MW: 56 kDa

Isotype: IgG

Purification: Affinity Purified

Species Reactivity: Hamster,Rat

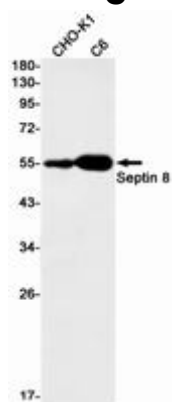
Conjugation: Unconjugated

Modification: Unmodified

Constituents: PBS (without Mg²⁺ and Ca²⁺), pH 7.3 containing 50% glycerol, 0.5% BSA and 0.02% sodium azide

Research Areas: -

Storage & Shipping: Store at -20°C. Avoid repeated freezing and thawing



Western blot analysis of Septin 8 in CHO-K1, C6 lysates using Septin 8 antibody.