

SENP1 RABBIT PAB

Cat.#: N226025

Product Name: Anti-SENP1 Rabbit pAb

Synonyms: SENP1; SuPr2

UNIPROT ID: Q9P0U3

Background: Protease that catalyzes two essential functions in the SUMO pathway: processing of full-length SUMO1, SUMO2 and SUMO3 to their mature forms and deconjugation of SUMO1, SUMO2 and SUMO3 from targeted proteins.

Immunogen: A synthetic peptide of human SENP1

Applications: WB,IHC-F,IHC-P,ICC/IF,FC

Recommended Dilutions: WB: 1/500-1/1000 IHC: 1/50-1/100 IF: 1/50-1/200 FC: 1/50-1/100

Host Species: Rabbit

Clonality: Rabbit Polyclonal

Clone ID: -

MW: Calculated MW: 73 kDa; Observed MW: 76 kDa

Isotype: IgG

Purification: Affinity Purified

Species Reactivity: Human

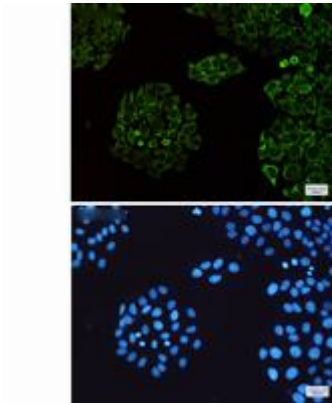
Conjugation: Unconjugated

Modification: Unmodified

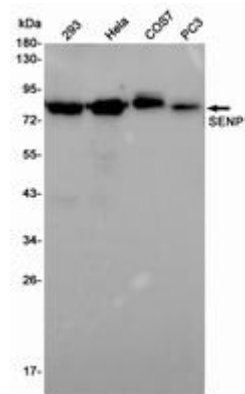
Constituents: PBS (without Mg²⁺ and Ca²⁺), pH 7.3 containing 50% glycerol, 0.5% BSA and 0.02% sodium azide

Research Areas: Cell Biology

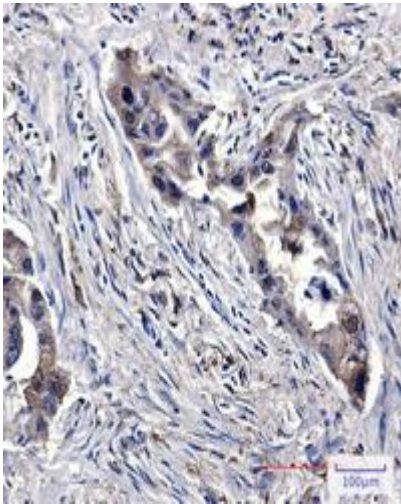
Storage & Shipping: Store at -20°C. Avoid repeated freezing and thawing



Immunocytochemistry analysis of SENP1 (green) in HeLa using SENP1 antibody, and DAPI (blue)



Western blot analysis of SENP1 in 293, HeLa, COS7, PC-3 lysates using SENP1 antibody.



Immunohistochemistry analysis of paraffin-embedded Human lung cancer using SENP1 antibody. High-pressure and temperature Sodium Citrate pH 6.0 was used for antigen retrieval.