

## SENP1 RABBIT PAB

**Cat.#:** S214666

**Product Name:** Anti-SENP1 Rabbit Polyclonal Antibody

**Synonyms:** SuPr-2

**UNIPROT ID:** Q9P0U3 (Gene Accession - NP\_001254523)

**Background:** This gene encodes a cysteine protease that specifically targets members of the small ubiquitin-like modifier (SUMO) protein family. This protease regulates SUMO pathways by deconjugating sumoylated proteins. This protease also functions to process the precursor SUMO proteins into their mature form. Alternate splicing results in multiple transcript variants.

**Immunogen:** Synthetic peptide of human SENP1

**Applications:** ELISA, WB, IHC

**Recommended Dilutions:** IHC: 25-100;WB: 200-1000;ELISA: 1000-2000

**Host Species:** Rabbit

**Clonality:** Rabbit Polyclonal

**Isotype:** Immunogen-specific rabbit IgG

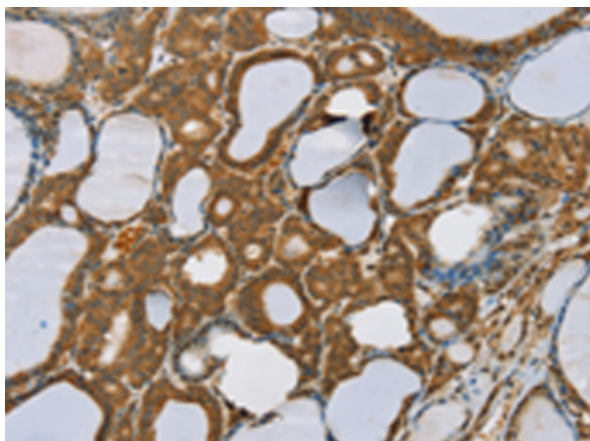
**Purification:** Antigen affinity purification

**Species Reactivity:** Human

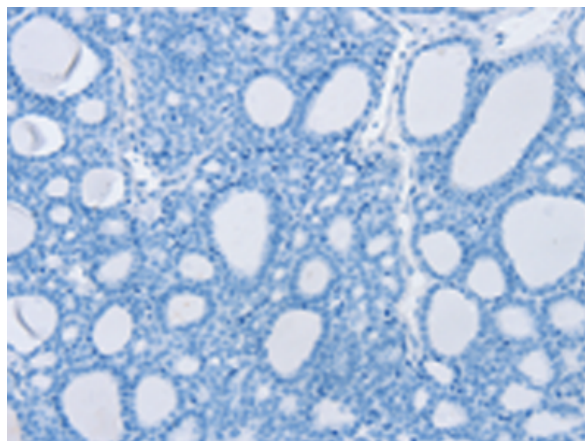
**Constituents:** PBS (without Mg<sup>2+</sup> and Ca<sup>2+</sup>), pH 7.4, 150 mM NaCl, 0.05% Sodium Azide and 40% glycerol

**Research Areas:** Epigenetics and Nuclear Signaling, Cell Biology

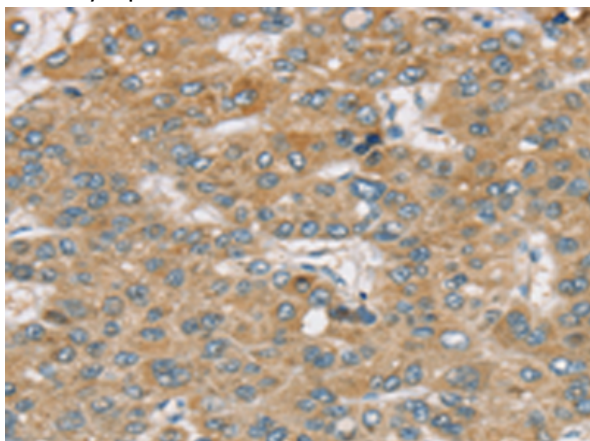
**Storage & Shipping:** Store at -20°C. Avoid repeated freezing and thawing



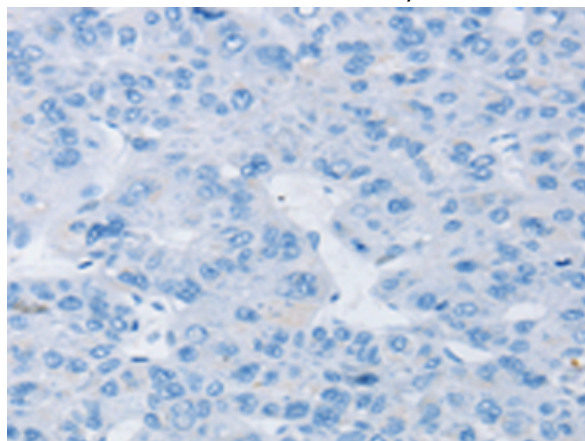
Immunohistochemistry analysis of paraffin embedded Human thyroid cancer tissue using 214666 (SENPI Antibody) at a dilution of 1/35 (Cytoplasm).



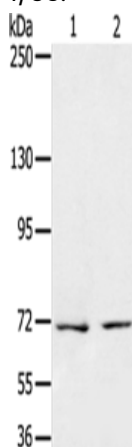
In comparison with the IHC on the left, the same paraffin-embedded Human thyroid cancer tissue is first treated with the synthetic peptide and then with 214666 (Anti-SENPI Antibody) at dilution 1/35.



The image on the left is immunohistochemistry of paraffin-embedded Human liver cancer tissue using 214666 (Anti-SENPI Antibody) at a dilution of 1/35.



In comparison with the IHC on the left, the same paraffin-embedded Human liver cancer tissue is first treated with synthetic peptide and then with D162184 (Anti-SENPI Antibody) at dilution 1/35.



Gel: 6% SDS-PAGE, Lysate: 40 µg;  
Lane 1-2: Jurkat cells, Raji cells;  
Primary antibody: 214666 (SENPI Antibody) at dilution 1/200;  
Secondary antibody: Goat anti rabbit IgG at 1/8000 dilution;  
Exposure time: 1 minute



# Product Description

Pioneering GTPase and Oncogene Product Development since 2010

---