

## SEMAPHORIN 7A RABBIT MAB

**Cat.#:** N263543

**Product Name:** Anti-Semaphorin 7A Rabbit Monoclonal Antibody

**Synonyms:** JMH; CD108; SEMAL; CDw108; SEMAK1; H-Sema-L; H-SEMA-K1

**UNIPROT ID:** O75326

**Background:** Plays an important role in integrin-mediated signaling and functions both in regulating cell migration and immune responses.

**Immunogen:** Recombinant protein of human Semaphorin 7a

**Applications:** WB,IHC-P,IP

**Recommended Dilutions:** WB: 1/500-1/1000 IHC: 1/50-1/100 IP: 1/20

**Host Species:** Rabbit

**Clonality:** Rabbit Monoclonal

**Clone ID:** R01-0F8

**MW:** Calculated MW: 75 kDa; Observed MW: 75 kDa

**Isotype:** IgG

**Purification:** Affinity Purified

**Species Reactivity:** Human

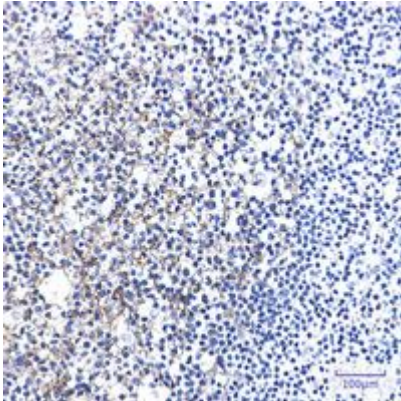
**Conjugation:** Unconjugated

**Modification:** Unmodified

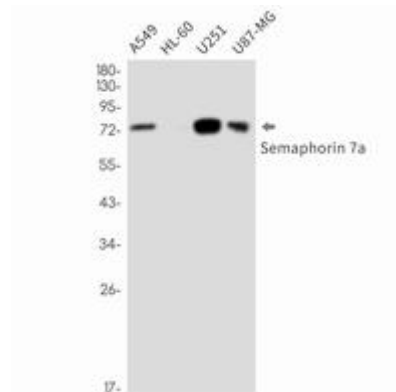
**Constituents:** PBS (without Mg<sup>2+</sup> and Ca<sup>2+</sup>), pH 7.3 containing 50% glycerol, 0.5% BSA and 0.02% sodium azide

**Research Areas:** -

**Storage & Shipping:** Store at -20°C. Avoid repeated freezing and thawing



Immunohistochemistry analysis of paraffin-embedded Human tonsil using Semaphorin 7a antibody. High-pressure and temperature Sodium Citrate pH 6.0 was used for antigen retrieval.



Western blot analysis of Semaphorin 7a in A549, HL-60, U251, U87-MG lysates using Semaphorin 7A antibody.