

## SEMA6A RABBIT PAB

**Cat.#:** S220892

**Product Name:** Anti-SEMA6A Rabbit Polyclonal Antibody

**Synonyms:** VIA; SEMA; HT018; SEMAQ; SEMA6A1

**UNIPROT ID:** Q9H2E6 (Gene Accession - NP\_065847 )

**Background:** Predicted to enable identical protein binding activity; signaling receptor binding activity; and transmembrane signaling receptor activity. Involved in cellular response to vascular endothelial growth factor stimulus; negative regulation of cell adhesion involved in sprouting angiogenesis; and negative regulation of signal transduction. Predicted to be integral component of membrane. Predicted to be active in extracellular space. Predicted to be integral component of plasma membrane.

**Immunogen:** Synthetic peptide of human SEMA6A

**Applications:** ELISA, WB, IHC

**Recommended Dilutions:** IHC: 50-100;WB: 1000-5000;ELISA: 5000-10000

**Host Species:** Rabbit

**Clonality:** Rabbit Polyclonal

**Isotype:** Immunogen-specific rabbit IgG

**Purification:** Antigen affinity purification

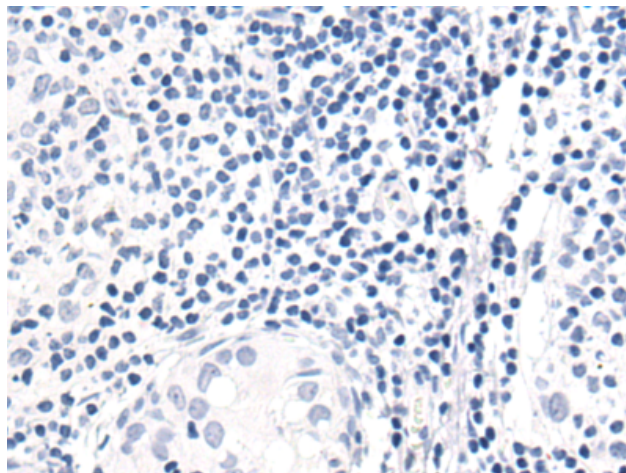
**Species Reactivity:** Human, Mouse

**Constituents:** PBS (without Mg<sup>2+</sup> and Ca<sup>2+</sup>), pH 7.4, 150 mM NaCl, 0.05% Sodium Azide and 40% glycerol

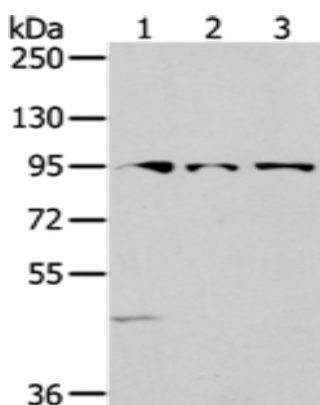
**Research Areas:** Neuroscience

**Storage & Shipping:** Store at -20°C. Avoid repeated freezing and thawing

✘ Immunohistochemistry analysis of paraffin embedded Human thyroid cancer tissue using 220892(SEMA6A Antibody) at a dilution of 1/50(Cytoplasm).



In comparison with the IHC on the left, the same paraffin-embedded Human thyroid cancer tissue is first treated with the synthetic peptide and then with 220892(Anti-SEMA6A Antibody) at dilution 1/50.



Gel: 6%SDS-PAGE, Lysate: 40  $\mu$ g;  
Lane: Mouse brain tissue lysate;  
Primary antibody: 220892(SEMA6A Antibody)  
at dilution 1/1500;  
Secondary antibody: HRP-conjugated Goat  
anti rabbit IgG at 1/5000 dilution;  
Exposure time: 15 seconds