

## SEH1L RABBIT MAB

**Cat.#:** N262880

**Product Name:** Anti-SEH1L Rabbit Monoclonal Antibody

**Synonyms:** GATOR complex protein SEH1; Nup107-160 subcomplex subunit SEH1

**UNIPROT ID:** Q8R2U0

**Background:** Component of the Nup107-160 subcomplex of the nuclear pore complex (NPC). The Nup107-160 subcomplex is required for the assembly of a functional NPC. The Nup107-160 subcomplex is also required for normal kinetochore microtubule attachment, mitotic progression and chromosome segregation. This subunit plays a role in recruitment of the Nup107-160 subcomplex to the kinetochore.

**Immunogen:** A synthetic peptide of mouse SEH1L

**Applications:** WB,IP

**Recommended Dilutions:** WB: 1/500-1/1000 IP: 1/20

**Host Species:** Rabbit

**Clonality:** Rabbit Monoclonal

**Clone ID:** R03-9E2

**MW:** Calculated MW: 40 kDa; Observed MW: 40 kDa

**Isotype:** IgG

**Purification:** Affinity Purified

**Species Reactivity:** Human,Mouse,Rat

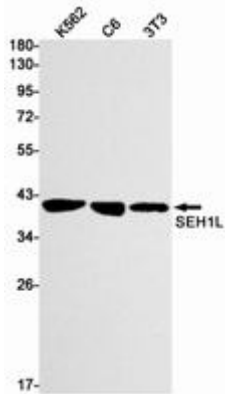
**Conjugation:** Unconjugated

**Modification:** Unmodified

**Constituents:** PBS (without Mg<sup>2+</sup> and Ca<sup>2+</sup>), pH 7.3 containing 50% glycerol, 0.5% BSA and 0.02% sodium azide

**Research Areas:** Epigenetics and Nuclear Signaling

**Storage & Shipping:** Store at -20°C. Avoid repeated freezing and thawing



Western blot analysis of SEH1L in K562, C6, 3T3 lysates using SEH1L antibody.