

## SEC61A RABBIT MAB

**Cat.#:** N262877

**Product Name:** Anti-SEC61A Rabbit Monoclonal Antibody

**Synonyms:** fb62c11; HSEC61; SEC 61; SEC 61A; Sec61 alpha 1; SEC61; SEC61A1

**UNIPROT ID:** Q9H9S3

**Background:** Plays a crucial role in the insertion of secretory and membrane polypeptides into the ER. Required for assembly of membrane and secretory proteins. Tightly associated with membrane-bound ribosomes, either directly or through adapter proteins.

**Immunogen:** Recombinant protein of human SEC61A

**Applications:** WB,IHC-F,IHC-P,ICC/IF,IP

**Recommended Dilutions:** WB: 1/500-1/1000 IHC: 1/50-1/100 IF: 1/50-1/200 IP: 1/20

**Host Species:** Rabbit

**Clonality:** Rabbit Monoclonal

**Clone ID:** R07-6B6

**MW:** Calculated MW: 52 kDa; Observed MW: 40 kDa

**Isotype:** IgG

**Purification:** Affinity Purified

**Species Reactivity:** Human,Mouse,Rat

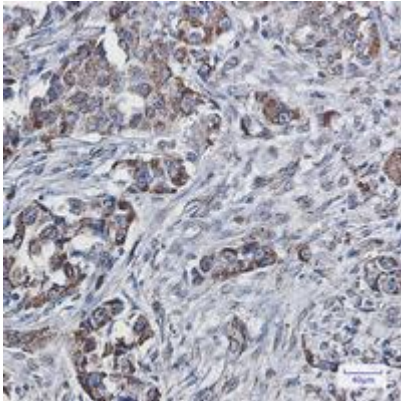
**Conjugation:** Unconjugated

**Modification:** Unmodified

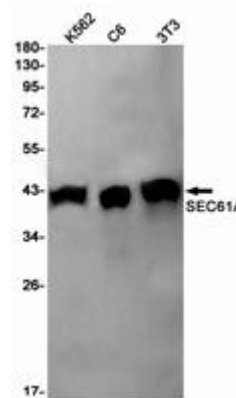
**Constituents:** PBS (without Mg<sup>2+</sup> and Ca<sup>2+</sup>), pH 7.3 containing 50% glycerol, 0.5% BSA and 0.02% sodium azide

**Research Areas:** Signal Transduction

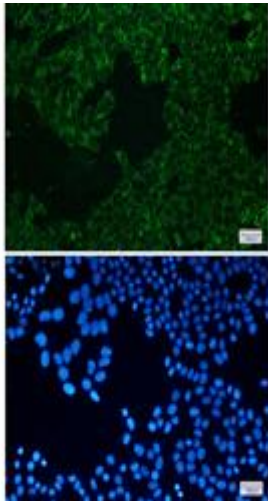
**Storage & Shipping:** Store at -20°C. Avoid repeated freezing and thawing



Immunohistochemistry analysis of paraffin-embedded Human lung cancer using SEC61A antibody. High-pressure and temperature Sodium Citrate pH 6.0 was used for antigen retrieval.



Western blot analysis of SEC61A in K562, C6, 3T3 lysates using SEC61A antibody.



Immunocytochemistry analysis of SEC61A (green) in HeLa using SEC61A antibody, and DAPI (blue)