

SEC22B RABBIT PAB

Cat.#: S219016

Product Name: Anti-SEC22B Rabbit Polyclonal Antibody

Synonyms: ERS-24; SEC22L1

UNIPROT ID: O75396 (Gene Accession - BC001364)

Background: The protein encoded by this gene is a member of the SEC22 family of vesicle trafficking proteins. It seems to complex with SNARE and it is thought to play a role in the ER-Golgi protein trafficking. This protein has strong similarity to Mus musculus and Cricetulus griseus proteins.

Immunogen: Fusion protein of human SEC22B

Applications: ELISA, WB, IHC

Recommended Dilutions: IHC: 50-300;WB: 500-2000;ELISA: 5000-10000

Host Species: Rabbit

Clonality: Rabbit Polyclonal

Isotype: Immunogen-specific rabbit IgG

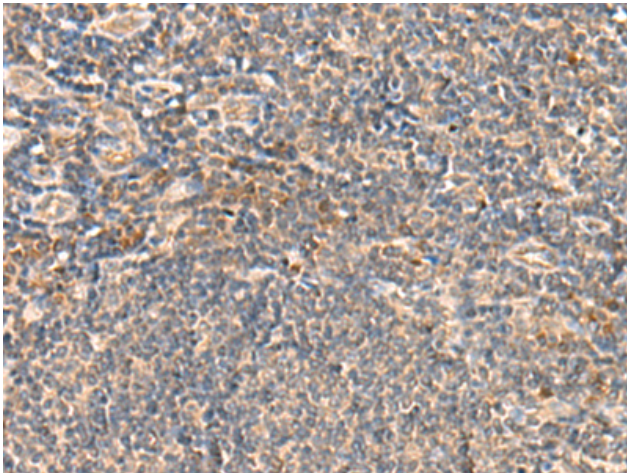
Purification: Antigen affinity purification

Species Reactivity: Human, Mouse, Rat

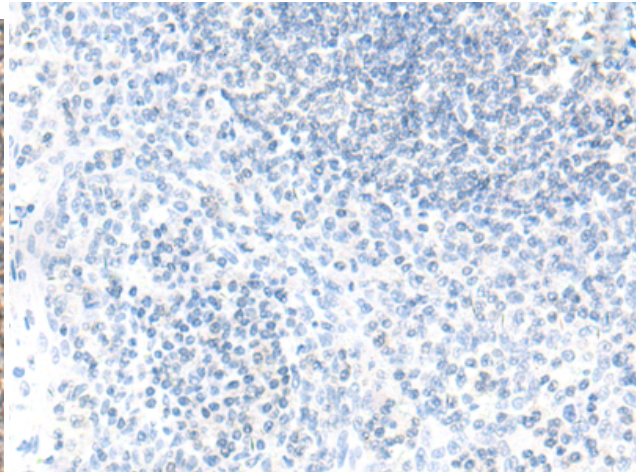
Constituents: PBS (without Mg²⁺ and Ca²⁺), pH 7.4, 150 mM NaCl, 0.05% Sodium Azide and 40% glycerol

Research Areas: Signal Transduction

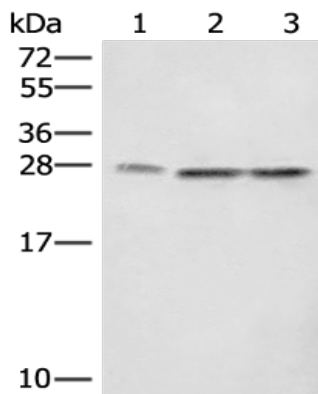
Storage & Shipping: Store at -20°C. Avoid repeated freezing and thawing



Immunohistochemistry analysis of paraffin embedded Human tonsil tissue using 219016(SEC22B Antibody) at a dilution of 1/60(Cell membrane).



In comparison with the IHC on the left, the same paraffin-embedded Human tonsil tissue is first treated with the fusion protein and then with 219016(Anti-SEC22B Antibody) at dilution 1/60.



Gel: 12%SDS-PAGE, Lysate: 40 µg;
Lane 1-3: A172, LOVO and Hela cell lysates;
Primary antibody: 219016(SEC22B Antibody) at dilution 1/450;
Secondary antibody: Goat anti rabbit IgG at 1/8000 dilution;
Exposure time: 10 seconds