

## SEC11A RABBIT PAB

**Cat.#:** S212522

**Product Name:** Anti-SEC11A Rabbit Polyclonal Antibody

**Synonyms:** SPC18; SPCS4A; SEC11L1; sid2895; 1810012E07Rik

**UNIPROT ID:** P67812 (Gene Accession - BC014508 )

**Background:** This gene encodes a member of the peptidase S26B family. The encoded protein is an 18kDa subunit of the signal peptidase complex and has been linked to cell migration and invasion, gastric cancer and lymph node metastasis. Alternative splicing results in multiple transcript variants. A related pseudogene has been identified on chromosome 8.

**Immunogen:** Fusion protein of human SEC11A

**Applications:** ELISA, WB, IHC

**Recommended Dilutions:** IHC: 40-200;WB: 500-2000;ELISA: 5000-10000

**Host Species:** Rabbit

**Clonality:** Rabbit Polyclonal

**Isotype:** Immunogen-specific rabbit IgG

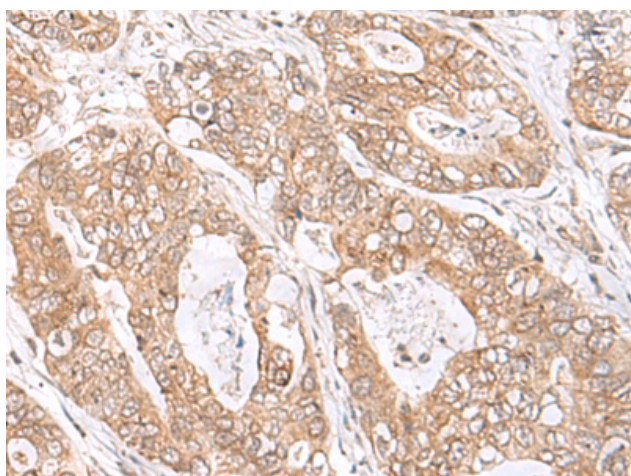
**Purification:** Antigen affinity purification

**Species Reactivity:** Human, Mouse, Rat

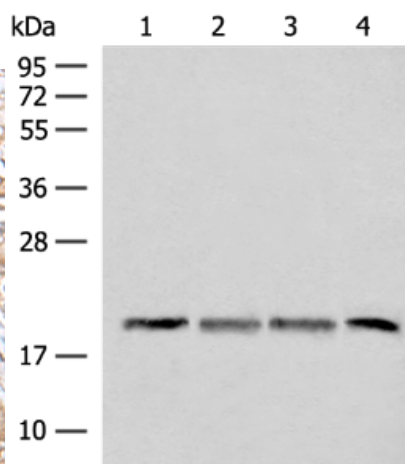
**Constituents:** PBS (without Mg<sup>2+</sup> and Ca<sup>2+</sup>), pH 7.4, 150 mM NaCl, 0.05% Sodium Azide and 40% glycerol

**Research Areas:** Cell Biology

**Storage & Shipping:** Store at -20°C. Avoid repeated freezing and thawing



Immunohistochemistry analysis of paraffin-embedded Human gastric cancer tissue using 212522(SEC11A Antibody) at a dilution of 1/45(Cell membrane).



Gel: 12%SDS-PAGE, Lysate: 40 µg;  
Lane 1-4: TM4, HEPG2 and A549 cell, Mouse liver tissue lysates;  
Primary antibody: 212522(SEC11A Antibody) at dilution 1/300;  
Secondary antibody: Goat anti rabbit IgG at 1/8000 dilution;  
Exposure time: 3 seconds