

## SDHA RABBIT PAB

**Cat.#:** N225796

**Product Name:** Anti-SDHA Rabbit pAb

**Synonyms:** SDHA; SDH2; SDHF; Succinate dehydrogenase [ubiquinone] flavoprotein subunit; mitochondrial; Flavoprotein subunit of complex II; Fp

**UNIPROT ID:** P31040

**Background:** Flavoprotein (FP) subunit of succinate dehydrogenase (SDH) that is involved in complex II of the mitochondrial electron transport chain and is responsible for transferring electrons from succinate to ubiquinone.

**Immunogen:** A synthesized peptide derived from human SDHA

**Applications:** WB,IHC-P,ICC/IF,IP,FC

**Recommended Dilutions:** WB: 1/500-1/1000 IHC: 1/50-1/100 IF: 1/50-1/200 IP: 1/20 FC: 1/50-1/100

**Host Species:** Rabbit

**Clonality:** Rabbit Polyclonal

**Clone ID:** -

**MW:** Calculated MW: 73 kDa; Observed MW: 73 kDa

**Isotype:** IgG

**Purification:** Affinity Chromatography

**Species Reactivity:** Human,Mouse,Rat

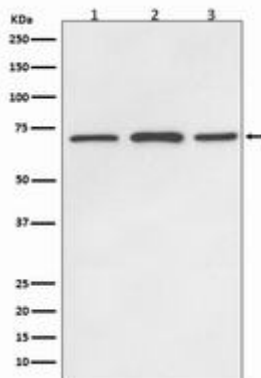
**Conjugation:** Unconjugated

**Modification:** Unmodified

**Constituents:** PBS (without Mg<sup>2+</sup> and Ca<sup>2+</sup>), pH 7.3 containing 50% glycerol, 0.5% BSA and 0.02% sodium azide

**Research Areas:** Tags & Cell Markers

**Storage & Shipping:** Store at -20°C. Avoid repeated freezing and thawing



Western blot analysis of SDHA in (1) HeLa lysates; (2) mouse brain lysates; (3) rat brain lysates; using SDHA antibody.