

## SDC3 RABBIT PAB

**Cat.#:** S220989

**Product Name:** Anti-SDC3 Rabbit Polyclonal Antibody

**Synonyms:** SDCN; SYND3

**UNIPROT ID:** O75056 (Gene Accession - NP\_055469 )

**Background:** The protein encoded by this gene belongs to the syndecan proteoglycan family. It may play a role in the organization of cell shape by affecting the actin cytoskeleton, possibly by transferring signals from the cell surface in a sugar-dependent mechanism. Allelic variants of this gene have been associated with obesity.

**Immunogen:** Synthetic peptide of human SDC3

**Applications:** ELISA, IHC

**Recommended Dilutions:** IHC: 40-150; ELISA: 2000-5000

**Host Species:** Rabbit

**Clonality:** Rabbit Polyclonal

**Isotype:** Immunogen-specific rabbit IgG

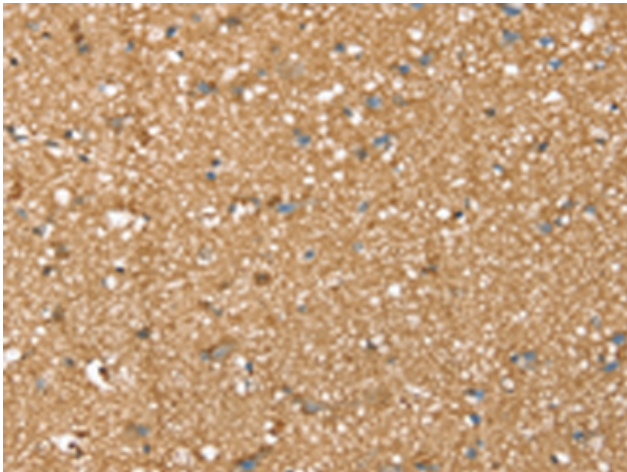
**Purification:** Antigen affinity purification

**Species Reactivity:** Human, Mouse, Rat

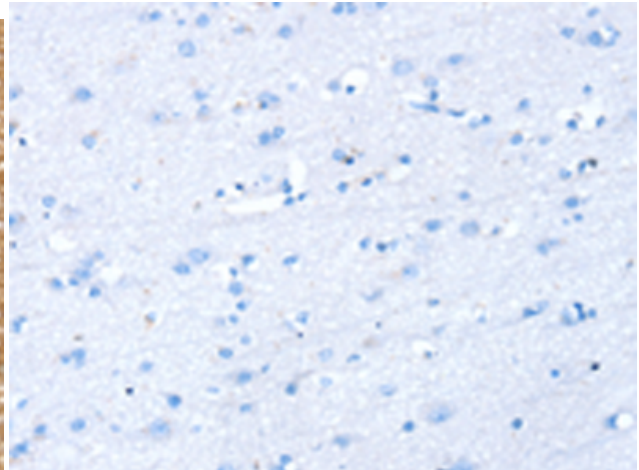
**Constituents:** PBS (without Mg<sup>2+</sup> and Ca<sup>2+</sup>), pH 7.4, 150 mM NaCl, 0.05% Sodium Azide and 40% glycerol

**Research Areas:** Signal Transduction

**Storage & Shipping:** Store at -20°C. Avoid repeated freezing and thawing



Immunohistochemistry analysis of paraffin embedded Human brain tissue using 220989 (SDC3 Antibody) at a dilution of 1/45 (Cytoplasm and Cell membrane).



In comparison with the IHC on the left, the same paraffin-embedded Human brain tissue is first treated with the synthetic peptide and then with 220989 (Anti-SDC3 Antibody) at dilution 1/45.