

## SCML2 RABBIT PAB

**Cat.#:** N225166

**Product Name:** Anti-SCML2 Rabbit pAb

**Synonyms:** SCML2; Sex comb on midleg-like protein 2

**UNIPROT ID:** Q9UQR0

**Background:** Putative Polycomb group (PcG) protein.

**Immunogen:** Synthesized peptide derived from the Internal region of human SCML2.

**Applications:** WB,ELISA

**Recommended Dilutions:** WB: 1/500-1/1000 ELISA: 1/10000

**Host Species:** Rabbit

**Clonality:** Rabbit Polyclonal

**Clone ID:** -

**MW:** Calculated MW: 77 kDa; Observed MW: 77 kDa

**Isotype:** IgG

**Purification:** Affinity Purified

**Species Reactivity:** Human

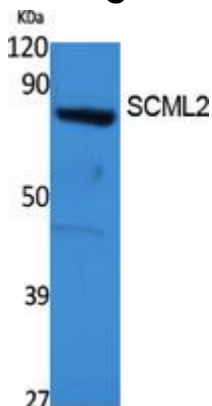
**Conjugation:** Unconjugated

**Modification:** Unmodified

**Constituents:** PBS (without Mg<sup>2+</sup> and Ca<sup>2+</sup>), pH 7.3 containing 50% glycerol, 0.5% BSA and 0.02% sodium azide

**Research Areas:** Epigenetics and Nuclear Signaling

**Storage & Shipping:** Store at -20°C. Avoid repeated freezing and thawing



Western blot analysis of SCML2 in 293 lysates using SCML2 antibody.