

SCIN RABBIT MAB

Cat.#: N262874

Product Name: Anti-SCIN Rabbit Monoclonal Antibody

Synonyms: Scinderin

UNIPROT ID: Q9Y6U3

Background: Ca²⁺-dependent actin filament-severing protein that has a regulatory function in exocytosis by affecting the organization of the microfilament network underneath the plasma membrane (PubMed:8547642, PubMed:26365202). Severing activity is inhibited by phosphatidylinositol 4,5-bis-phosphate (PIP₂). In vitro, also has barbed end capping and nucleating activities in the presence of Ca²⁺. Required for megakaryocyte differentiation, maturation, polyploidization and apoptosis with the release of platelet-like particles (PubMed:11568009). Plays a role in osteoclastogenesis (OCG) and actin cytoskeletal organization in osteoclasts. Regulates chondrocyte proliferation and differentiation. Inhibits cell proliferation and tumorigenesis. Signaling is mediated by MAPK, p38 and JNK pathways (PubMed:11568009).

Immunogen: A synthetic peptide of human SCIN

Applications: WB,IHC-P

Recommended Dilutions: WB: 1/500-1/1000 IHC: 1/50-1/100

Host Species: Rabbit

Clonality: Rabbit Monoclonal

Clone ID: R07-6G2

MW: Calculated MW: 80 kDa; Observed MW: 80 kDa

Isotype: IgG

Purification: Affinity Purified

Species Reactivity: Human

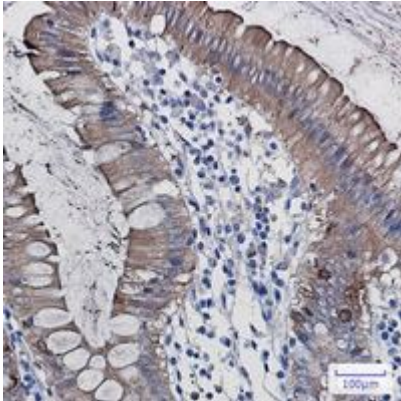
Conjugation: Unconjugated

Modification: Unmodified

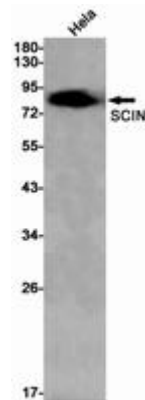
Constituents: PBS (without Mg²⁺ and Ca²⁺), pH 7.3 containing 50% glycerol, 0.5% BSA and 0.02% sodium azide

Research Areas: Signal Transduction

Storage & Shipping: Store at -20°C. Avoid repeated freezing and thawing



Immunohistochemistry analysis of paraffin-embedded Human colon cancer using SCIN antibody. High- pressure and temperature Sodium Citrate pH 6.0 was used for antigen retrieval.



Western blot analysis of SCIN in Sodium Hela lysates using SCIN antibody.