

SCGB1A1 RABBIT PAB

Cat.#: S216873

Product Name: Anti-SCGB1A1 Rabbit Polyclonal Antibody

Synonyms: UGB; UPI; CC10; CC16; CCSP; UP-1; CCPBP

UNIPROT ID: P11684 (Gene Accession - BC004481)

Background: This gene encodes a member of the secretoglobin family of small secreted proteins. The encoded protein has been implicated in numerous functions including anti-inflammation, inhibition of phospholipase A2 and the sequestering of hydrophobic ligands. Defects in this gene are associated with a susceptibility to asthma.

Immunogen: Fusion protein of human SCGB1A1

Applications: ELISA, IHC

Recommended Dilutions: IHC: 50-200; ELISA: 5000-10000

Host Species: Rabbit

Clonality: Rabbit Polyclonal

Isotype: Immunogen-specific rabbit IgG

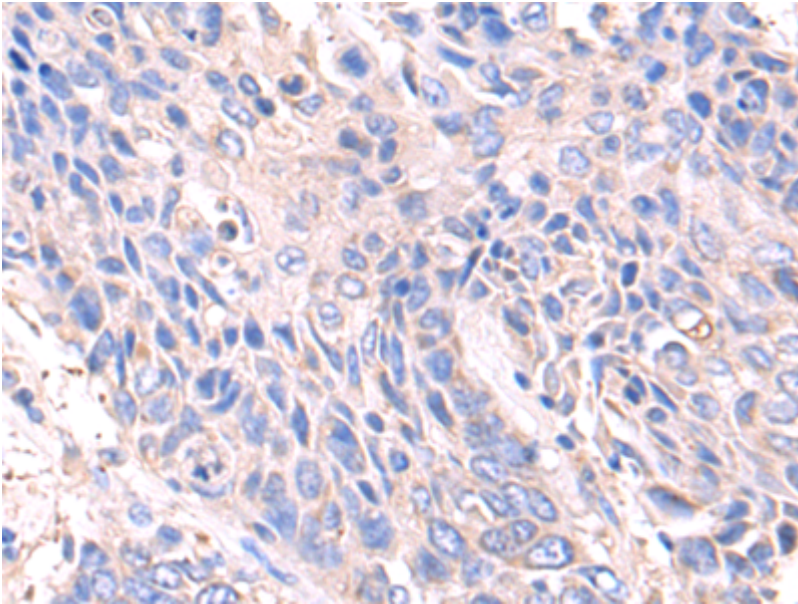
Purification: Antigen affinity purification

Species Reactivity: Human

Constituents: PBS (without Mg²⁺ and Ca²⁺), pH 7.4, 150 mM NaCl, 0.05% Sodium Azide and 40% glycerol

Research Areas: Immunology

Storage & Shipping: Store at -20°C. Avoid repeated freezing and thawing



Immunohistochemistry analysis of paraffin-embedded Human lung cancer tissue using 216873(SCGB1A1 Antibody) at a dilution of 1/80(Cytoplasm).