

## SCCPDH RABBIT PAB

**Cat.#:** S219117

**Product Name:** Anti-SCCPDH Rabbit Polyclonal Antibody

**Synonyms:** NET11; CGI-49

**UNIPROT ID:** Q8NBX0 (Gene Accession - BC026185 )

**Background:** SCCPDH belongs to the saccharopine dehydrogenase family. The exact function of SCCPDH remains unknown.

**Immunogen:** Fusion protein of human SCCPDH

**Applications:** ELISA, WB, IHC

**Recommended Dilutions:** IHC: 50-300;WB: 1000-5000;ELISA: 5000-10000

**Host Species:** Rabbit

**Clonality:** Rabbit Polyclonal

**Isotype:** Immunogen-specific rabbit IgG

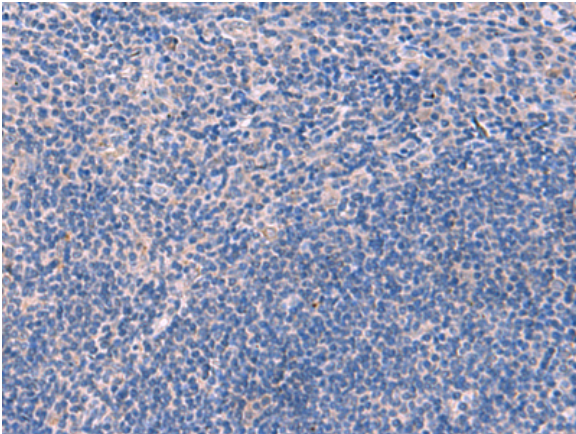
**Purification:** Antigen affinity purification

**Species Reactivity:** Human, Mouse, Rat

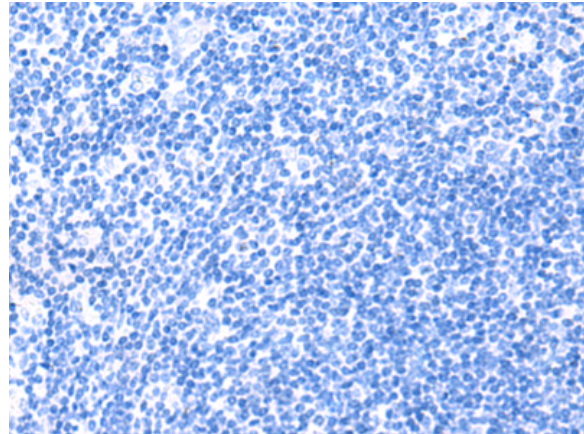
**Constituents:** PBS (without Mg<sup>2+</sup> and Ca<sup>2+</sup>), pH 7.4, 150 mM NaCl, 0.05% Sodium Azide and 40% glycerol

**Research Areas:** Metabolism

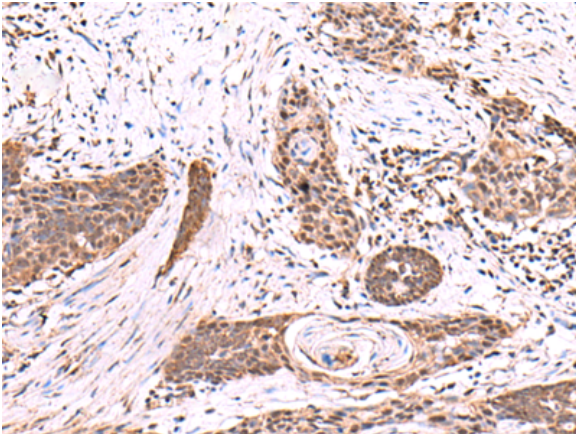
**Storage & Shipping:** Store at -20°C. Avoid repeated freezing and thawing



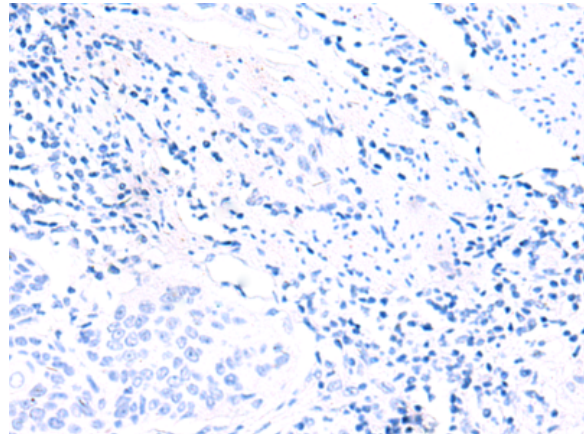
Immunohistochemistry analysis of paraffin embedded Human tonsil tissue using 219117(SCCPDH Antibody) at a dilution of 1/85(Cytoplasm or Nucleus).



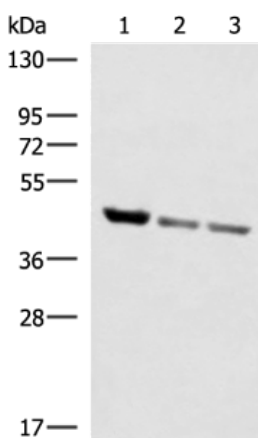
In comparison with the IHC on the left, the same paraffin-embedded Human tonsil tissue is first treated with the fusion protein and then with 219117(Anti-SCCPDH Antibody) at dilution 1/85.



The image on the left is immunohistochemistry of paraffin-embedded Human esophagus cancer tissue using 219117(Anti-SCCPDH Antibody) at a dilution of 1/85.



In comparison with the IHC on the left, the same paraffin-embedded Human esophagus cancer tissue is first treated with fusion protein and then with D225872(Anti-SCCPDH Antibody) at dilution 1/85.



Gel: 8%SDS-PAGE, Lysate: 40 µg;  
 Lane 1-3: Human fetal liver tissue, PC-3 and A172 cell lysates;  
 Primary antibody: 219117(SCCPDH Antibody) at dilution 1/1000;  
 Secondary antibody: HRP-conjugated Goat anti rabbit IgG at 1/5000 dilution;  
 Exposure time: 1 minute



# Product Description

Pioneering GTPase and Oncogene Product Development since 2010

---