

SCAND1 RABBIT PAB

Cat.#: S218992

Product Name: Anti-SCAND1 Rabbit Polyclonal Antibody

Synonyms: RAZ1; SDP1

UNIPROT ID: P57086 (Gene Accession - BC000785)

Background: This gene encodes a SCAN box domain-containing protein. The SCAN domain is a highly conserved, leucine-rich motif of approximately 60 aa originally found within a subfamily of zinc finger proteins. This gene belongs to a family of genes that encode an isolated SCAN domain, but no zinc finger motif. This protein binds to and may regulate the function of the transcription factor myeloid zinc finger 1B. Alternate splicing results in multiple transcript variants.

Immunogen: Fusion protein of human SCAND1

Applications: ELISA, IHC

Recommended Dilutions: IHC: 50–300; ELISA: 5000–10000

Host Species: Rabbit

Clonality: Rabbit Polyclonal

Isotype: Immunogen-specific rabbit IgG

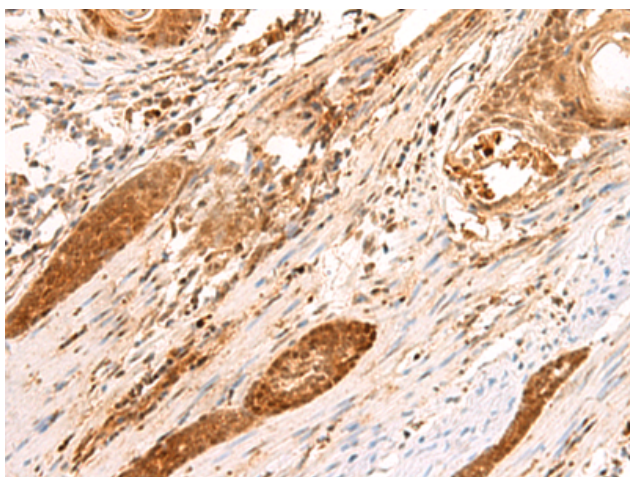
Purification: Antigen affinity purification

Species Reactivity: Human

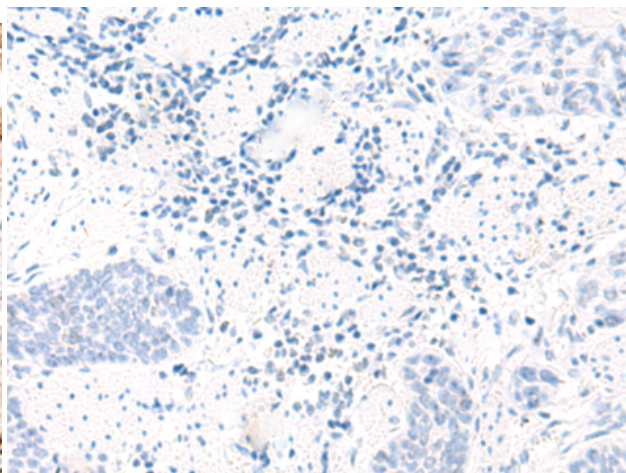
Constituents: PBS (without Mg²⁺ and Ca²⁺), pH 7.4, 150 mM NaCl, 0.05% Sodium Azide and 40% glycerol

Research Areas: Epigenetics and Nuclear Signaling

Storage & Shipping: Store at -20°C. Avoid repeated freezing and thawing



Immunohistochemistry analysis of paraffin embedded Human esophagus cancer tissue using 218992 (SCAND1 Antibody) at a dilution of 1/90 (Nucleus).



In comparison with the IHC on the left, the same paraffin-embedded Human esophagus cancer tissue is first treated with the fusion protein and then with 218992 (Anti-SCAND1 Antibody) at dilution 1/90.