

SAXO2 RABBIT PAB

Cat.#: S222005

Product Name: Anti-SAXO2 Rabbit Polyclonal Antibody

Synonyms: FAM154B

UNIPROT ID: Q658L1 (Gene Accession - NP_001008227)

Background: The function of this protein remains unknown.

Immunogen: Synthetic peptide of human SAXO2

Applications: ELISA, IHC

Recommended Dilutions: IHC: 40-200; ELISA: 5000-10000

Host Species: Rabbit

Clonality: Rabbit Polyclonal

Isotype: Immunogen-specific rabbit IgG

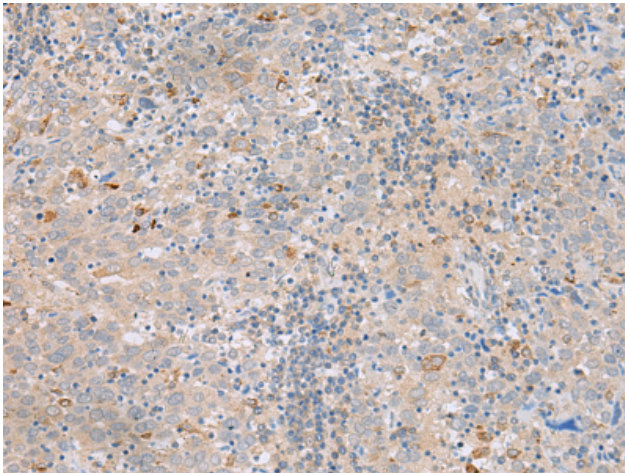
Purification: Antigen affinity purification

Species Reactivity: Human, Mouse

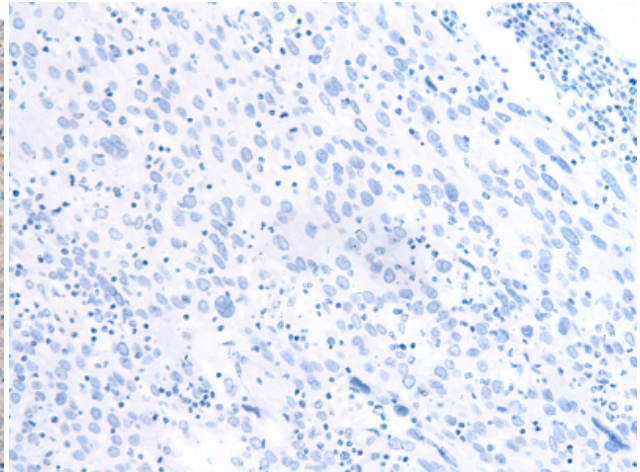
Constituents: PBS (without Mg²⁺ and Ca²⁺), pH 7.4, 150 mM NaCl, 0.05% Sodium Azide and 40% glycerol

Research Areas: Signal Transduction

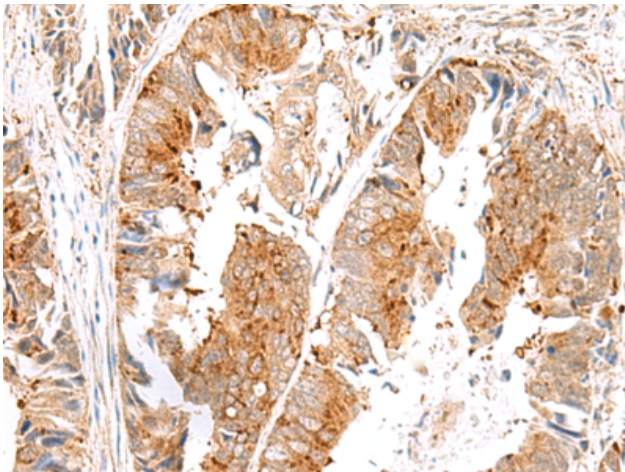
Storage & Shipping: Store at -20°C. Avoid repeated freezing and thawing



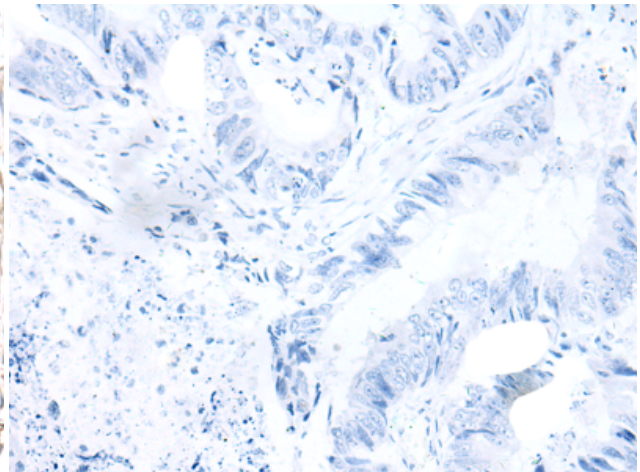
Immunohistochemistry analysis of paraffin-embedded Human cervical cancer tissue using 222005 (SAXO2 Antibody) at a dilution of 1/45 (Cell membrane).



In comparison with the IHC on the left, the same paraffin-embedded Human cervical cancer tissue is first treated with the synthetic peptide and then with 222005 (Anti-SAXO2 Antibody) at dilution 1/45.



The image on the left is immunohistochemistry of paraffin-embedded Human colorectal cancer tissue using 222005 (Anti-SAXO2 Antibody) at a dilution of 1/45.



In comparison with the IHC on the left, the same paraffin-embedded Human colorectal cancer tissue is first treated with synthetic peptide and then with D263873 (Anti-SAXO2 Antibody) at dilution 1/45.