

## SAV1 RABBIT PAB

**Cat.#:** S219368

**Product Name:** Anti-SAV1 Rabbit Polyclonal Antibody

**Synonyms:** SAV; WW45; WWP4

**UNIPROT ID:** Q9H4B6 (Gene Accession - BC020537 )

**Background:** WW domain-containing proteins are found in all eukaryotes and play an important role in the regulation of a wide variety of cellular functions such as protein degradation, transcription, and RNA splicing. This gene encodes a protein with two WW domains, a SARAH domain, and a coiled-coil region and is ubiquitously expressed in adult tissues. This protein binds to MST1 (mammalian sterile 20-like kinase 1) and promotes MST1-induced apoptosis. It has also been shown to bind to HAX1 (hematopoietic cell-specific protein 1 (HS1)-associated protein X-1) and to attenuate the anti-apoptotic effects of HAX1. Studies in human and mouse suggest this gene acts as a tumor suppressor.

**Immunogen:** Fusion protein of human SAV1

**Applications:** ELISA, WB, IHC

**Recommended Dilutions:** IHC: 100-300;WB: 500-2000;ELISA: 5000-10000

**Host Species:** Rabbit

**Clonality:** Rabbit Polyclonal

**Isotype:** Immunogen-specific rabbit IgG

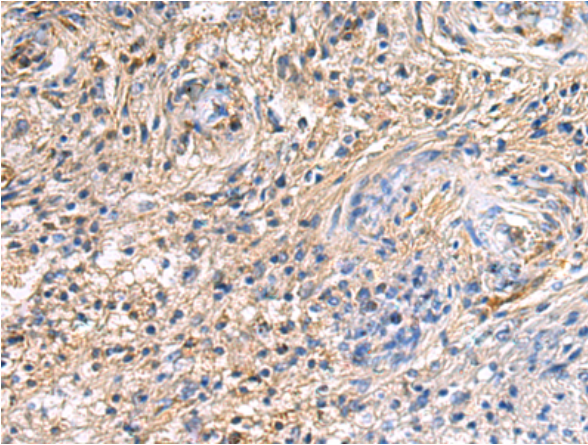
**Purification:** Antigen affinity purification

**Species Reactivity:** Human, Mouse, Rat

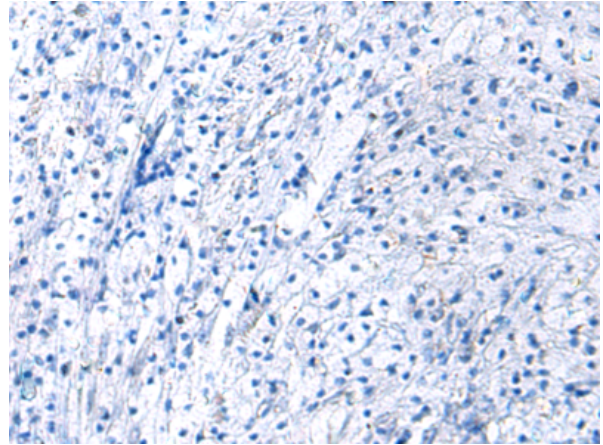
**Constituents:** PBS (without Mg<sup>2+</sup> and Ca<sup>2+</sup>), pH 7.4, 150 mM NaCl, 0.05% Sodium Azide and 40% glycerol

**Research Areas:** Signal Transduction

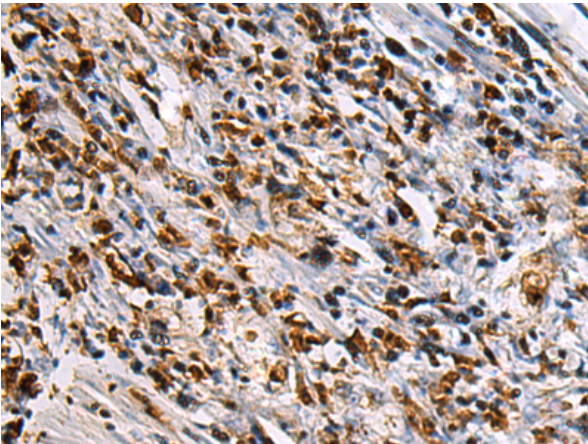
**Storage & Shipping:** Store at -20°C. Avoid repeated freezing and thawing



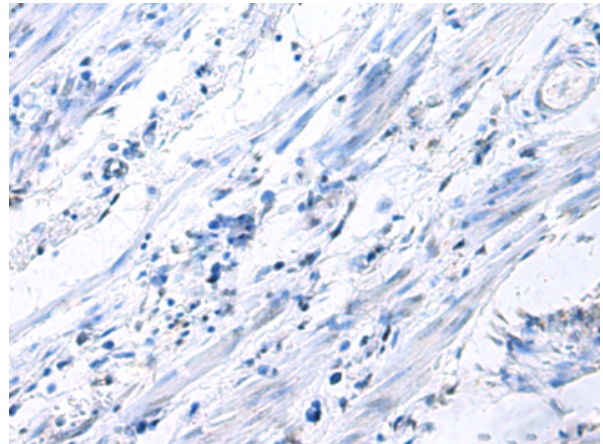
Immunohistochemistry analysis of paraffin embedded Human brain tissue using 219368(SAV1 Antibody) at a dilution of 1/90(Cytoplasm or Nucleus).



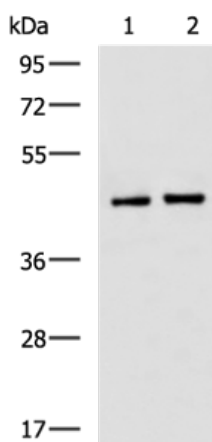
In comparison with the IHC on the left, the same paraffin-embedded Human brain tissue is first treated with the fusion protein and then with 219368(Anti-SAV1 Antibody) at dilution 1/90.



The image on the left is immunohistochemistry of paraffin-embedded Human gastric cancer tissue using 219368(Anti-SAV1 Antibody) at a dilution of 1/90.



In comparison with the IHC on the left, the same paraffin-embedded Human gastric cancer tissue is first treated with fusion protein and then with D226556(Anti-SAV1 Antibody) at dilution 1/90.



Gel: 8%SDS-PAGE, Lysate: 40 µg;  
 Lane 1-2: HUVEC, PC-3 cell lysates;  
 Primary antibody: 219368(SAV1 Antibody) at dilution 1/800;  
 Secondary antibody: HRP-conjugated Goat anti rabbit IgG at 1/5000 dilution;  
 Exposure time: 1 minute



# Product Description

Pioneering GTPase and Oncogene Product Development since 2010

---