

SASH1 RABBIT PAB

Cat.#: S214648

Product Name: Anti-SASH1 Rabbit Polyclonal Antibody

Synonyms: SH3D6A; dJ323M4.1

UNIPROT ID: O94885 (Gene Accession - NP_056093)

Background: This gene encodes a scaffold protein involved in the TLR4 signaling pathway that may stimulate cytokine production and endothelial cell migration in response to invading pathogens. The encoded protein has also been described as a potential tumor suppressor that may negatively regulate proliferation, apoptosis, and invasion of cancer cells, and reduced expression of this gene has been observed in multiple human cancers. Mutations in this gene may be associated with abnormal skin pigmentation in human patients.

Immunogen: Synthetic peptide of human SASH1

Applications: ELISA, WB, IHC

Recommended Dilutions: IHC: 30-150;WB: 500-2000;ELISA: 5000-10000

Host Species: Rabbit

Clonality: Rabbit Polyclonal

Isotype: Immunogen-specific rabbit IgG

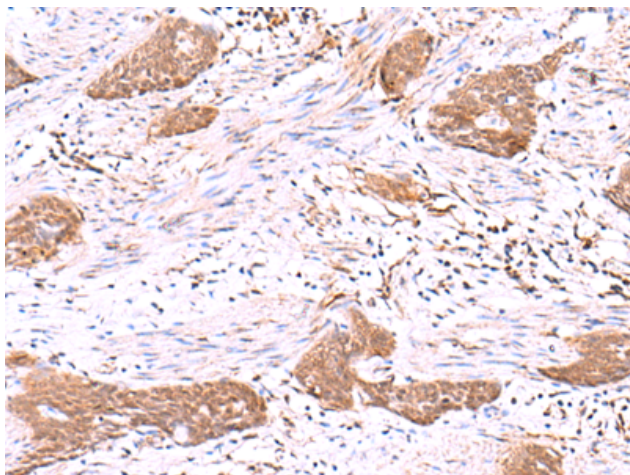
Purification: Antigen affinity purification

Species Reactivity: Human, Mouse

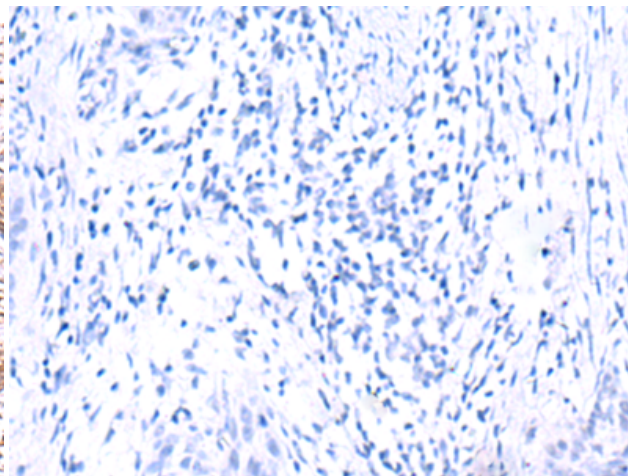
Constituents: PBS (without Mg²⁺ and Ca²⁺), pH 7.4, 150 mM NaCl, 0.05% Sodium Azide and 40% glycerol

Research Areas: Cancer

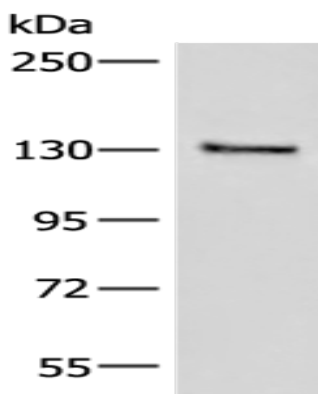
Storage & Shipping: Store at -20°C. Avoid repeated freezing and thawing



Immunohistochemistry analysis of paraffin embedded Human esophagus cancer tissue using 214648(SASH1 Antibody) at a dilution of 1/30(Nucleus).



In comparison with the IHC on the left, the same paraffin-embedded Human esophagus cancer tissue is first treated with the synthetic peptide and then with 214648(Anti-SASH1 Antibody) at dilution 1/30.



Gel: 6%SDS-PAGE, Lysate: 40 μ g;
Lane: Human urinary bladder tissue lysate;
Primary antibody: 214648(SASH1 Antibody) at dilution 1/300;
Secondary antibody: Goat anti rabbit IgG at 1/8000 dilution;
Exposure time: 20 seconds