

## SART3 RABBIT PAB

**Cat.#:** S220878

**Product Name:** Anti-SART3 Rabbit Polyclonal Antibody

**Synonyms:** P100; p110; DSAP1; TIP110; p110(nrb); RP11-13G14

**UNIPROT ID:** Q15020 (Gene Accession - NP\_055521)

**Background:** The protein encoded by this gene is an RNA-binding nuclear protein that is a tumor-rejection antigen. This antigen possesses tumor epitopes capable of inducing HLA-A24-restricted and tumor-specific cytotoxic T lymphocytes in cancer patients and may be useful for specific immunotherapy. This gene product is found to be an important cellular factor for HIV-1 gene expression and viral replication.

**Immunogen:** Synthetic peptide of human SART3

**Applications:** ELISA, IHC

**Recommended Dilutions:** IHC: 20-100; ELISA: 1000-2000

**Host Species:** Rabbit

**Clonality:** Rabbit Polyclonal

**Isotype:** Immunogen-specific rabbit IgG

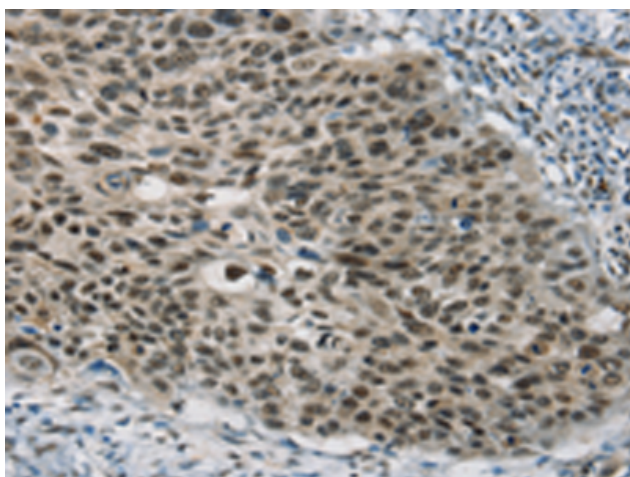
**Purification:** Antigen affinity purification

**Species Reactivity:** Human, Mouse

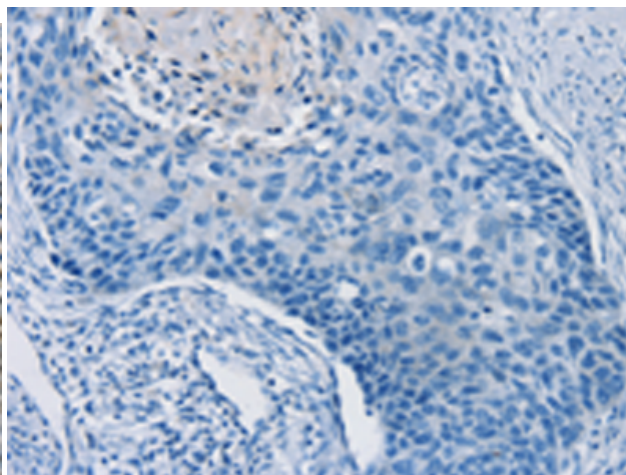
**Constituents:** PBS (without Mg<sup>2+</sup> and Ca<sup>2+</sup>), pH 7.4, 150 mM NaCl, 0.05% Sodium Azide and 40% glycerol

**Research Areas:** Epigenetics and Nuclear Signaling, Cancer

**Storage & Shipping:** Store at -20°C. Avoid repeated freezing and thawing



Immunohistochemistry analysis of paraffin embedded Human esophagus cancer tissue using 220878(SART3 Antibody) at a dilution of 1/20(Cytoplasm and Nucleus).



In comparison with the IHC on the left, the same paraffin-embedded Human esophagus cancer tissue is first treated with the synthetic peptide and then with 220878(Anti-SART3 Antibody) at dilution 1/20.