

SARA RABBIT MAB

Cat.#: N263540

Product Name: Anti-SARA Rabbit Monoclonal Antibody

Synonyms: NSP; SARA; MADHIP; SMADIP; PPP1R173

UNIPROT ID: O95405

Background: Early endosomal protein that functions to recruit SMAD2/SMAD3 to intracellular membranes and to the TGF-beta receptor.

Immunogen: A synthetic peptide of human SARA

Applications: WB,IHC-P,IP

Recommended Dilutions: WB: 1/500-1/1000 IHC: 1/50-1/100 IP: 1/20

Host Species: Rabbit

Clonality: Rabbit Monoclonal

Clone ID: R01-0A4

MW: Calculated MW: 156 kDa; Observed MW: 156 kDa

Isotype: IgG

Purification: Affinity Purified

Species Reactivity: Human

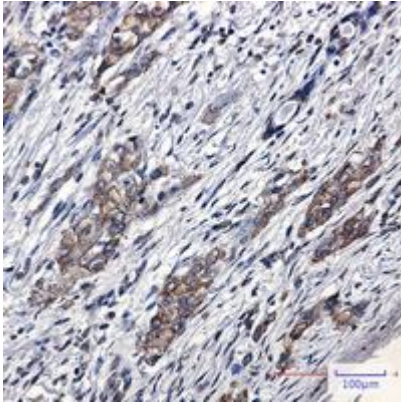
Conjugation: Unconjugated

Modification: Unmodified

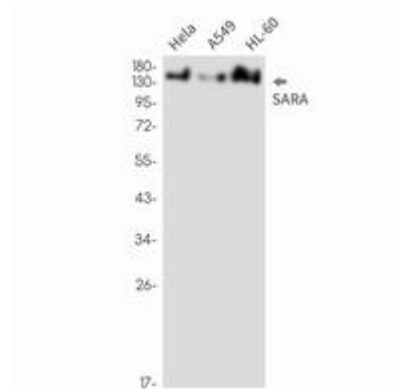
Constituents: PBS (without Mg²⁺ and Ca²⁺), pH 7.3 containing 50% glycerol, 0.5% BSA and 0.02% sodium azide

Research Areas: Signal Transduction

Storage & Shipping: Store at -20°C. Avoid repeated freezing and thawing



Immunohistochemistry analysis of paraffin-embedded Human lung cancer using SARA antibody. High-pressure and temperature Sodium Citrate pH 6.0 was used for antigen retrieval.



Western blot analysis of SARA in HeLa, A549, HL-60 lysates using SARA antibody.