

## SAMSN1 RABBIT PAB

**Cat.#:** S219090

**Product Name:** Anti-SAMSN1 Rabbit Polyclonal Antibody

**Synonyms:** Sly2; HACSI; NASH1; SASH2; SH3D6B

**UNIPROT ID:** Q9NSI8 (Gene Accession - BC029112 )

**Background:** SAMSN1 is a member of a novel gene family of putative adaptors and scaffold proteins containing SH3 and SAM (sterile alpha motif) domains (Claudio et al., 2001 [PubMed 11536050]).

**Immunogen:** Fusion protein of human SAMSN1

**Applications:** ELISA, WB, IHC

**Recommended Dilutions:** IHC: 50-300;WB: 1000-5000;ELISA: 5000-10000

**Host Species:** Rabbit

**Clonality:** Rabbit Polyclonal

**Isotype:** Immunogen-specific rabbit IgG

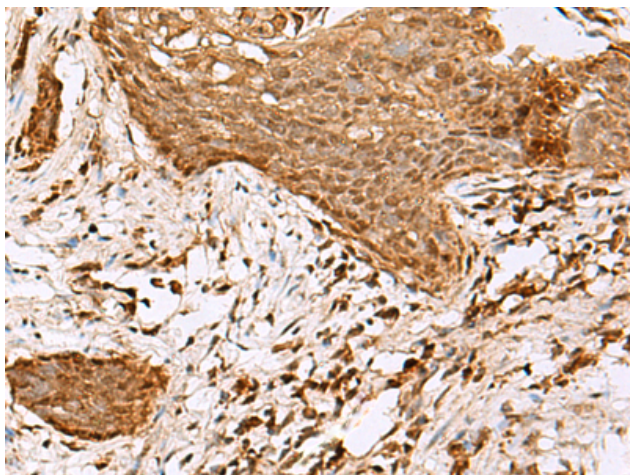
**Purification:** Antigen affinity purification

**Species Reactivity:** Human, Mouse

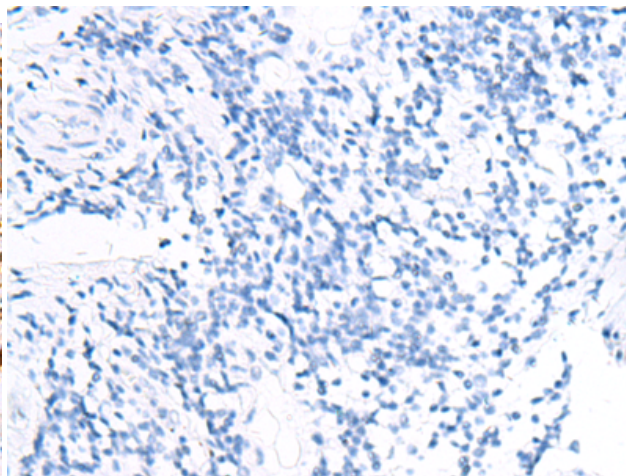
**Constituents:** PBS (without Mg<sup>2+</sup> and Ca<sup>2+</sup>), pH 7.4, 150 mM NaCl, 0.05% Sodium Azide and 40% glycerol

**Research Areas:** Stem Cells

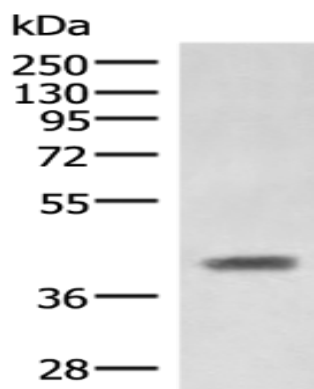
**Storage & Shipping:** Store at -20°C. Avoid repeated freezing and thawing



Immunohistochemistry analysis of paraffin embedded Human esophagus cancer tissue using 219090(SAMSNI Antibody) at a dilution of 1/80(Nucleus).



In comparison with the IHC on the left, the same paraffin-embedded Human esophagus cancer tissue is first treated with the fusion protein and then with 219090(Anti-SAMSNI Antibody) at dilution 1/80.



Gel: 8%SDS-PAGE, Lysate: 40  $\mu$ g;  
Lane: Mouse liver tissue lysate;  
Primary antibody: 219090(SAMSNI Antibody)  
at dilution 1/1000;  
Secondary antibody: HRP-conjugated Goat  
anti rabbit IgG at 1/5000 dilution;  
Exposure time: 1 second