

SA2 RABBIT PAB

Cat.#: N226002

Product Name: Anti-SA2 Rabbit pAb

Synonyms: SA 2; SA-2; SA2; SCC3 homolog 2; SCC3B; stag2; Stromal antigen 2

UNIPROT ID: Q8N3U4

Background: Component of cohesin complex, a complex required for the cohesion of sister chromatids after DNA replication. The cohesin complex apparently forms a large proteinaceous ring within which sister chromatids can be trapped. At anaphase, the complex is cleaved and dissociates from chromatin, allowing sister chromatids to segregate.

Immunogen: Recombinant protein of human SA2

Applications: WB,IHC-F,IHC-P,ICC/IF,FC

Recommended Dilutions: WB: 1/500-1/1000 IHC: 1/50-1/100 IF: 1/50-1/200 FC: 1/50-1/100

Host Species: Rabbit

Clonality: Rabbit Polyclonal

Clone ID: -

MW: Calculated MW: 141 kDa; Observed MW: 141 kDa

Isotype: IgG

Purification: Affinity Purified

Species Reactivity: Human,Mouse,Rat

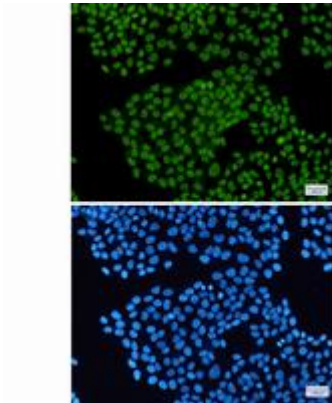
Conjugation: Unconjugated

Modification: Unmodified

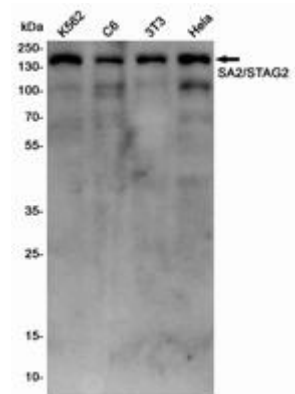
Constituents: PBS (without Mg²⁺ and Ca²⁺), pH 7.3 containing 50% glycerol, 0.5% BSA and 0.02% sodium azide

Research Areas: Cell Biology

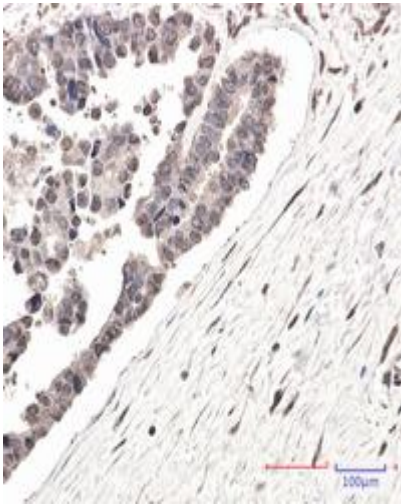
Storage & Shipping: Store at -20°C. Avoid repeated freezing and thawing



Immunocytochemistry analysis of SA2 (green) in HeLa using SA2 antibody, and DAPI (blue)



Western blot analysis of SA2/STAG2 in K562, C6, 3T3, HeLa lysates using SA2 antibody.



Immunohistochemistry analysis of paraffin-embedded Human Cholangiocarcinoma using SA2 antibody. High-pressure and temperature Sodium Citrate pH 6.0 was used for antigen retrieval.