

## S100 ALPHA6 RABBIT MAB

**Cat.#:** N263538

**Product Name:** Anti-S100 alpha6 Rabbit Monoclonal Antibody

**Synonyms:** S100 alpha6; Protein S100-A6; Calcyclin; MLN 4; PRA; CACY; CABP; 5B10

**UNIPROT ID:** P06703

**Background:** S100A6 (calcyclin) is involved in a number of cellular processes, including exocytosis and cell cycle regulation. In addition, S100A6 interacts with a number of proteins such as SIP, GAPDH, and annexins in a calcium-dependent fashion. Research studies demonstrate that a down regulation of corresponding S100A6 gene expression causes a decrease in cell proliferation.

**Immunogen:** Recombinant protein of human S100 alpha 6/PRA

**Applications:** WB, ICC/IF, IP

**Recommended Dilutions:** WB: 1/500-1/1000 IF: 1/50-1/200 IP: 1/20

**Host Species:** Rabbit

**Clonality:** Rabbit Monoclonal

**Clone ID:** R01-8A4

**MW:** Calculated MW: 10 kDa; Observed MW: 10 kDa

**Isotype:** IgG

**Purification:** Affinity Purified

**Species Reactivity:** Human, Mouse

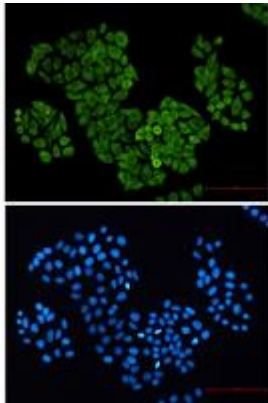
**Conjugation:** Unconjugated

**Modification:** Unmodified

**Constituents:** PBS (without Mg<sup>2+</sup> and Ca<sup>2+</sup>), pH 7.3 containing 50% glycerol, 0.5% BSA and 0.02% sodium azide

**Research Areas:** Cell Biology

**Storage & Shipping:** Store at -20°C. Avoid repeated freezing and thawing



Immunocytochemistry analysis of S100 alpha 6/PRA (green) in HeLa using S100 alpha 6/PRA antibody, and DAPI (blue)



Western blot analysis of S100 alpha 6/PRA in 3T3 lysates using S100 alpha 6/PRA antibody.



Western blot analysis of S100 alpha 6/PRA in HeLa, A549 lysates using S100 alpha 6/PRA antibody.