

## RYK RABBIT MAB

**Cat.#:** N263113

**Product Name:** Anti-RYK Rabbit Monoclonal Antibody

**Synonyms:** ERK 3; JTK5; JTK5A; Ryk; RYK1; Vik

**UNIPROT ID:** P34925

**Background:** May be a coreceptor along with FZD8 of Wnt proteins, such as WNT1, WNT3, WNT3A and WNT5A. Involved in neuron differentiation, axon guidance, corpus callosum establishment and neurite outgrowth. In response to WNT3 stimulation, receptor C-terminal cleavage occurs in its transmembrane region and allows the C-terminal intracellular product to translocate from the cytoplasm to the nucleus where it plays a crucial role in neuronal development.

**Immunogen:** A synthetic peptide of human RYK

**Applications:** WB,IHC-F,IHC-P,ICC/IF,IP

**Recommended Dilutions:** WB: 1/500-1/1000 IHC: 1/50-1/100 IF: 1/50-1/200 IP: 1/20

**Host Species:** Rabbit

**Clonality:** Rabbit Monoclonal

**Clone ID:** R03-4E1

**MW:** Calculated MW: 68 kDa; Observed MW: 72 kDa

**Isotype:** IgG

**Purification:** Affinity Purified

**Species Reactivity:** Human

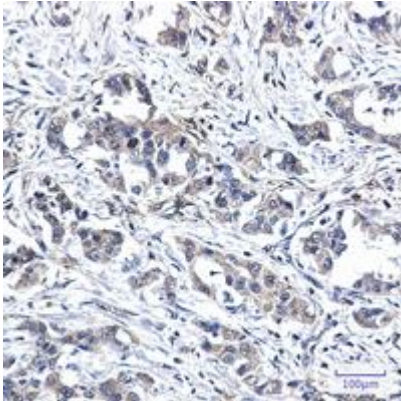
**Conjugation:** Unconjugated

**Modification:** Unmodified

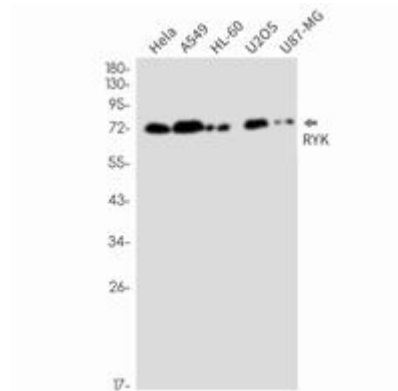
**Constituents:** PBS (without Mg<sup>2+</sup> and Ca<sup>2+</sup>), pH 7.3 containing 50% glycerol, 0.5% BSA and 0.02% sodium azide

**Research Areas:** -

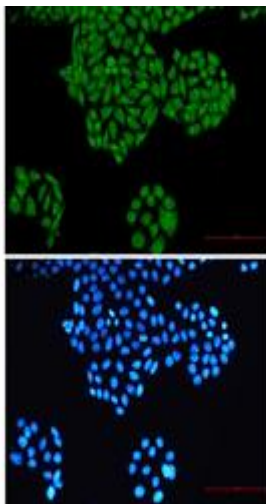
**Storage & Shipping:** Store at -20°C. Avoid repeated freezing and thawing



Immunohistochemistry analysis of paraffin-embedded Human lung cancer using RYK antibody. High-pressure and temperature Sodium Citrate pH 6.0 was used for antigen retrieval.



Western blot analysis of RYK in HeLa, A549, HL-60, U2OS, U87-MG lysates using RYK antibody.



Immunocytochemistry analysis of RYK (green) in HeLa using RYK antibody, and DAPI (blue)