

## RRM2 RABBIT MAB

**Cat.#:** N262851

**Product Name:** Anti-RRM2 Rabbit Monoclonal Antibody

**Synonyms:** R2; RR2M

**UNIPROT ID:** P31350

**Background:** Provides the precursors necessary for DNA synthesis. Catalyzes the biosynthesis of deoxyribonucleotides from the corresponding ribonucleotides. Inhibits Wnt signaling.

**Immunogen:** Recombinant protein of human RRM2

**Applications:** WB, ICC/IF, IP

**Recommended Dilutions:** WB: 1/500-1/1000 IF: 1/50-1/200 IP: 1/20

**Host Species:** Rabbit

**Clonality:** Rabbit Monoclonal

**Clone ID:** R09-4G8

**MW:** Calculated MW: 45 kDa; Observed MW: 45 kDa

**Isotype:** IgG

**Purification:** Affinity Purified

**Species Reactivity:** Human

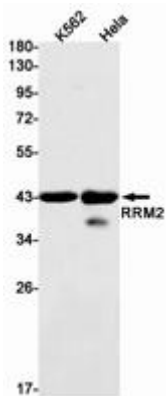
**Conjugation:** Unconjugated

**Modification:** Unmodified

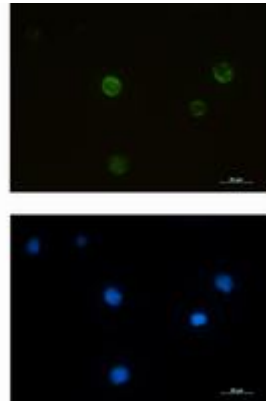
**Constituents:** PBS (without Mg<sup>2+</sup> and Ca<sup>2+</sup>), pH 7.3 containing 50% glycerol, 0.5% BSA and 0.02% sodium azide

**Research Areas:** Epigenetics and Nuclear Signaling

**Storage & Shipping:** Store at -20°C. Avoid repeated freezing and thawing



Western blot analysis of RRM2 in K562, HeLa lysates using RRM2 antibody.



Immunocytochemistry analysis of RRM2 (green) in Jurkat using RRM2 antibody, and DAPI (blue).