

RPL7 RABBIT PAB

Cat.#: N225464

Product Name: Anti-RPL7 Rabbit pAb

Synonyms: L7; humL7-1

UNIPROT ID: P18124

Background: Component of the large ribosomal subunit (PubMed:12962325). Binds to G-rich structures in 28S rRNA and in mRNAs. Plays a regulatory role in the translation apparatus; inhibits cell-free translation of mRNAs.

Immunogen: The antiserum was produced against synthesized peptide derived from human RPL7. AA range:199-248

Applications: WB,IHC-P,ELISA

Recommended Dilutions: WB: 1/500-1/1000 IHC: 1/50-1/100 ELISA: 1/10000

Host Species: Rabbit

Clonality: Rabbit Polyclonal

Clone ID: -

MW: Calculated MW: 29 kDa; Observed MW: 32 kDa

Isotype: IgG

Purification: Affinity Chromatography

Species Reactivity: Human,Mouse,Rat

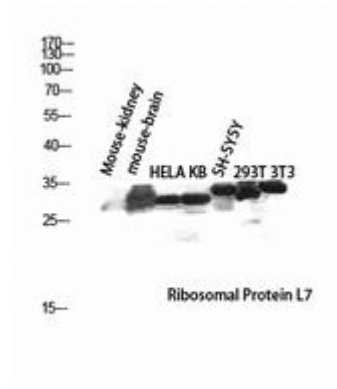
Conjugation: Unconjugated

Modification: Unmodified

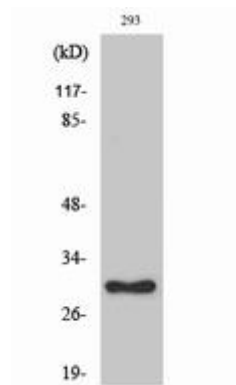
Constituents: PBS (without Mg²⁺ and Ca²⁺), pH 7.3 containing 50% glycerol, 0.5% BSA and 0.02% sodium azide

Research Areas: Epigenetics and Nuclear Signaling

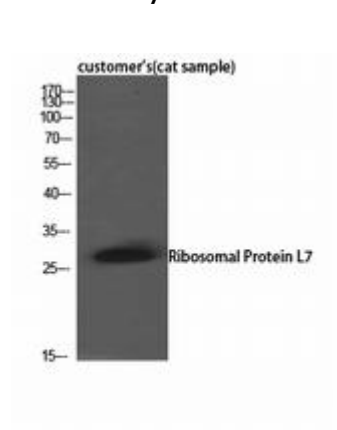
Storage & Shipping: Store at -20°C. Avoid repeated freezing and thawing



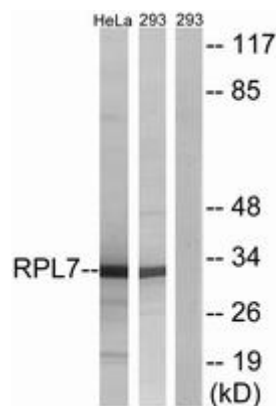
Western blot analysis of RPL7 in mouse kidney, mouse brain, HELA, KB, SH-SY5Y, 293T and 3T3 lysates using Ribosomal Protein L7 antibody.



Western blot analysis of RPL7 in various lysates using RPL7 antibody.



Western blot analysis of RPL7 in cat sample lysates using Ribosomal Protein L7 antibody.



Western blot analysis of RPL7 in 293 and HeLa lysates using RPL7 antibody. The lane on the right is blocked with the synthesized peptide.