

## RPA3 RABBIT PAB

**Cat.#:** N225217

**Product Name:** Anti-RPA3 Rabbit pAb

**Synonyms:** Replication protein A 14 kDa subunit (RP-A p14; Replication factor A protein 3; RF-A protein 3)

**UNIPROT ID:** P35244

**Background:** As part of the heterotrimeric replication protein A complex (RPA/RP-A), binds and stabilizes single-stranded DNA intermediates that form during DNA replication or upon DNA stress.

**Immunogen:** Synthetic peptide from human protein at AA range: 30-80

**Applications:** WB,ELISA

**Recommended Dilutions:** WB: 1/500-1/1000 ELISA: 1/10000

**Host Species:** Rabbit

**Clonality:** Rabbit Polyclonal

**Clone ID:** -

**MW:** Calculated MW: 14 kDa; Observed MW: 14 kDa

**Isotype:** IgG

**Purification:** Affinity Purified

**Species Reactivity:** Human,Mouse

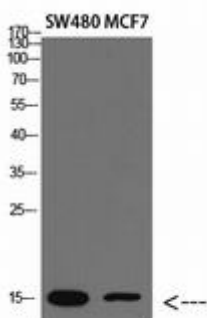
**Conjugation:** Unconjugated

**Modification:** Unmodified

**Constituents:** PBS (without Mg<sup>2+</sup> and Ca<sup>2+</sup>), pH 7.3 containing 50% glycerol, 0.5% BSA and 0.02% sodium azide

**Research Areas:** Epigenetics and Nuclear Signaling

**Storage & Shipping:** Store at -20°C. Avoid repeated freezing and thawing



Western blot analysis of RPA3 in SW480, MCF-7 lysates using RPA3 antibody.



# Product Description

Pioneering GTPase and Oncogene Product Development since 2010

---