

RP2 RABBIT PAB

Cat.#: S222448

Product Name: Anti-RP2 Rabbit Polyclonal Antibody

Synonyms: XRP2; NME10; TBCCD2; NM23-H10; DELXp11.3

UNIPROT ID: O75695 (Gene Accession - NP_008846)

Background: The RP2 locus has been implicated as one cause of X-linked retinitis pigmentosa. The predicted gene product shows homology with human cofactor C, a protein involved in the ultimate step of beta-tubulin folding. Progressive retinal degeneration may therefore be due to the accumulation of incorrectly-folded photoreceptor or neuron-specific tubulin isoforms followed by progressive cell death.

Immunogen: Synthetic peptide of human RP2

Applications: ELISA, IHC

Recommended Dilutions: IHC: 50-200; ELISA: 5000-10000

Host Species: Rabbit

Clonality: Rabbit Polyclonal

Isotype: Immunogen-specific rabbit IgG

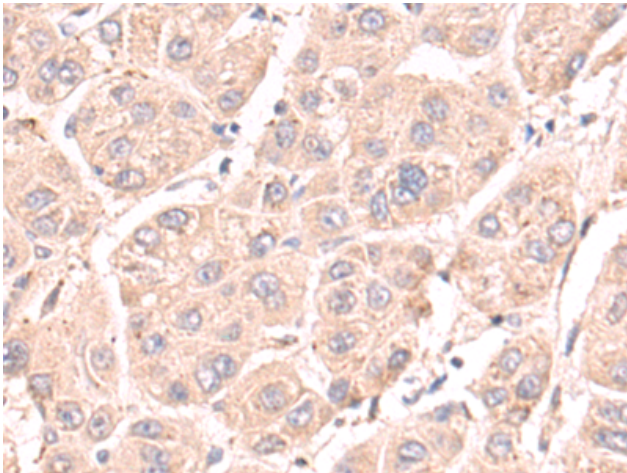
Purification: Antigen affinity purification

Species Reactivity: Human, Mouse

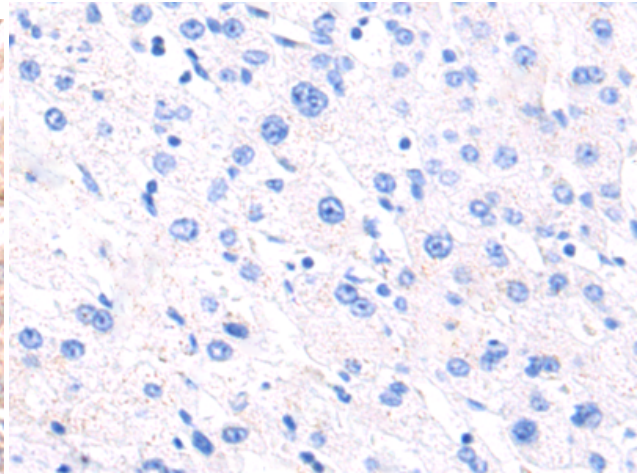
Constituents: PBS (without Mg²⁺ and Ca²⁺), pH 7.4, 150 mM NaCl, 0.05% Sodium Azide and 40% glycerol

Research Areas: Neuroscience

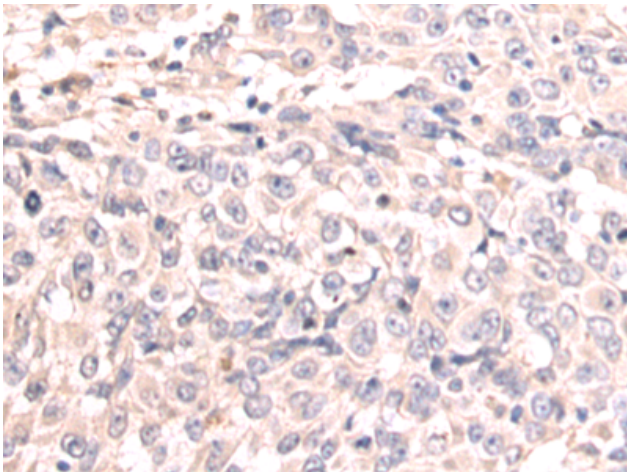
Storage & Shipping: Store at -20°C. Avoid repeated freezing and thawing



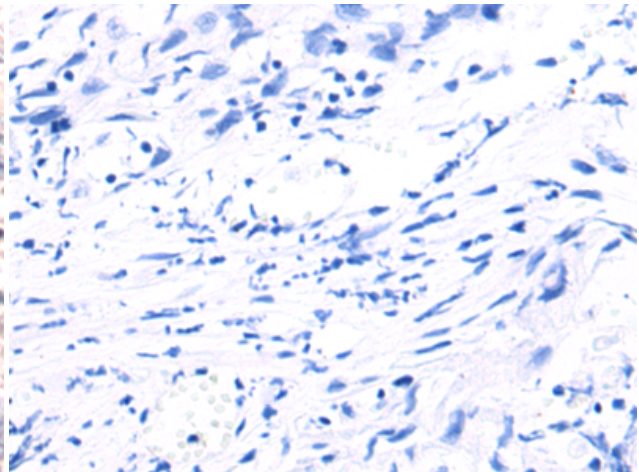
Immunohistochemistry analysis of paraffin embedded Human liver cancer tissue using 222448(RP2 Antibody) at a dilution of 1/50(Cytoplasm).



In comparison with the IHC on the left, the same paraffin-embedded Human liver cancer tissue is first treated with the synthetic peptide and then with 222448(Anti-RP2 Antibody) at dilution 1/50.



The image on the left is immunohistochemistry of paraffin-embedded Human bladder cancer tissue using 222448(Anti-RP2 Antibody) at a dilution of 1/50.



In comparison with the IHC on the left, the same paraffin-embedded Human bladder cancer tissue is first treated with synthetic peptide and then with D264623(Anti-RP2 Antibody) at dilution 1/50.