

ROMO1 RABBIT PAB

Cat.#: S215879

Product Name: Anti-ROMO1 Rabbit Polyclonal Antibody

Synonyms: MTGM; MTGMP; C20orf52; bA353C18.2

UNIPROT ID: P60602 (Gene Accession - NP_542786)

Background: The protein encoded by this gene is a mitochondrial membrane protein that is responsible for increasing the level of reactive oxygen species (ROS) in cells. The protein also has antimicrobial activity against a variety of bacteria by inducing bacterial membrane breakage.

Immunogen: Synthetic peptide of human ROMO1

Applications: ELISA, WB, IHC

Recommended Dilutions: IHC: 30-150;WB: 200-1000;ELISA: 5000-10000

Host Species: Rabbit

Clonality: Rabbit Polyclonal

Isotype: Immunogen-specific rabbit IgG

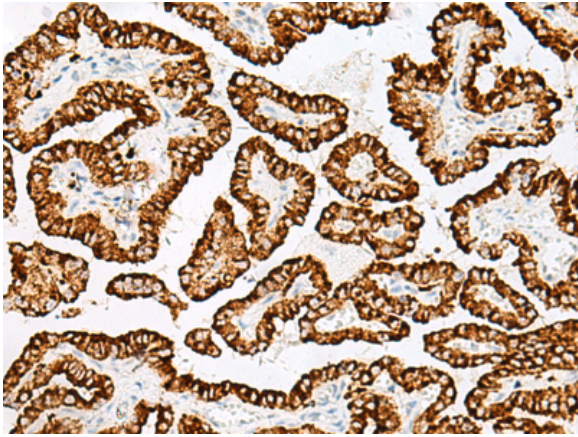
Purification: Antigen affinity purification

Species Reactivity: Human, Mouse

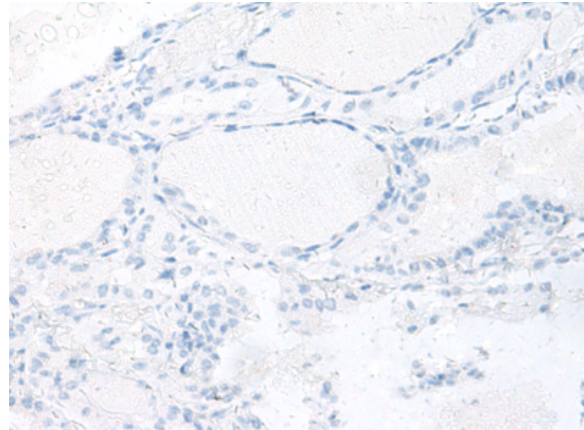
Constituents: PBS (without Mg²⁺ and Ca²⁺), pH 7.4, 150 mM NaCl, 0.05% Sodium Azide and 40% glycerol

Research Areas: Metabolism, Epigenetics and Nuclear Signaling, Cancer, Cell Biology

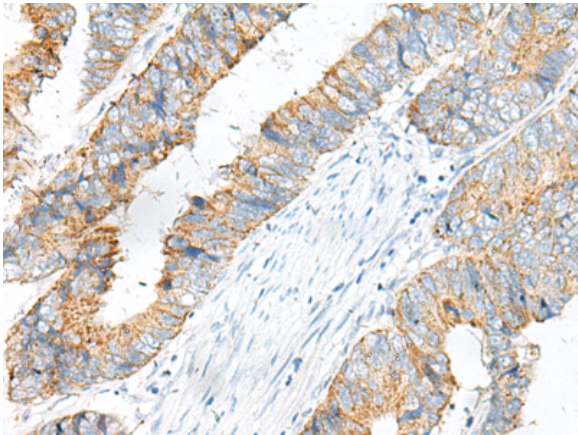
Storage & Shipping: Store at -20°C. Avoid repeated freezing and thawing



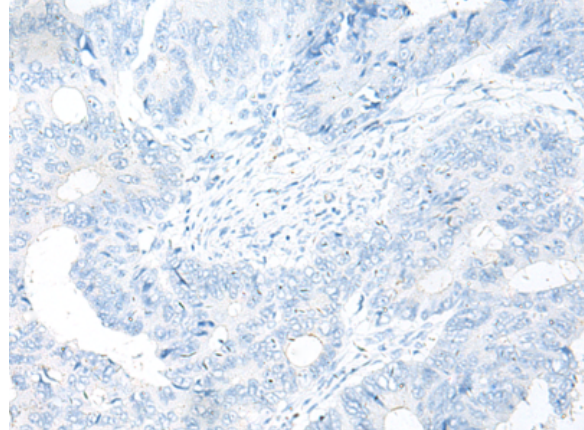
Immunohistochemistry analysis of paraffin embedded Human thyroid cancer tissue using 215879(ROMO1 Antibody) at a dilution of 1/25(Cell membrane).



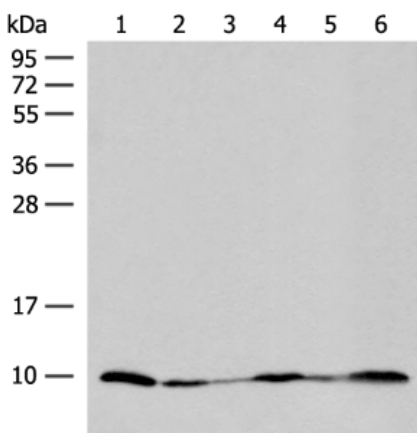
In comparison with the IHC on the left, the same paraffin-embedded Human thyroid cancer tissue is first treated with the synthetic peptide and then with 215879(Anti-ROMO1 Antibody) at dilution 1/25.



The image on the left is immunohistochemistry of paraffin-embedded Human colorectal cancer tissue using 215879(Anti-ROMO1 Antibody) at a dilution of 1/25.



In comparison with the IHC on the left, the same paraffin-embedded Human colorectal cancer tissue is first treated with synthetic peptide and then with D164043(Anti-ROMO1 Antibody) at dilution 1/25.



Gel: 12%SDS-PAGE, Lysate: 40 µg;
 Lane 1-6: Mouse heart tissue, Human heart tissue,
 HEPG2 cell, PC-3 cell, 231 cell and 293T cell lysates;
 Primary antibody: 215879(ROMO1 Antibody) at
 dilution 1/200;
 Secondary antibody: Goat anti rabbit IgG at 1/8000
 dilution;
 Exposure time: 2 minutes



Product Description

Pioneering GTPase and Oncogene Product Development since 2010
