

ROCK2 RABBIT PAB

Cat.#: N225860

Product Name: Anti-ROCK2 Rabbit pAb

Synonyms: p164 ROCK 2; Rho kinase 2; ROCK 2; Rock II; Rock2m; ROK alpha; ROKalpha

UNIPROT ID: O75116

Background: Regulates the assembly of the actin cytoskeleton. Promotes formation of stress fibers and of focal adhesion complexes. Plays a role in smooth muscle contraction.

Immunogen: A synthesized peptide derived from human ROCK2

Applications: WB, ICC/IF

Recommended Dilutions: WB: 1/500-1/1000 IF: 1/50-1/200

Host Species: Rabbit

Clonality: Rabbit Polyclonal

Clone ID: -

MW: Calculated MW: 161 kDa; Observed MW: 161 kDa

Isotype: IgG

Purification: Affinity Chromatography

Species Reactivity: Human, Mouse, Rat

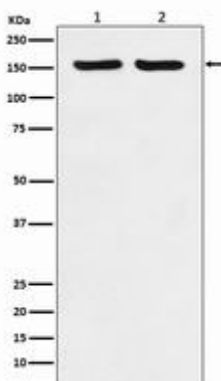
Conjugation: Unconjugated

Modification: Unmodified

Constituents: PBS (without Mg²⁺ and Ca²⁺), pH 7.3 containing 50% glycerol, 0.5% BSA and 0.02% sodium azide

Research Areas: Cell Biology

Storage & Shipping: Store at -20°C. Avoid repeated freezing and thawing



Western blot analysis of ROCK2 in (1) Hela lysates; (2) RAW264.7 lysates using ROCK2 antibody.



Product Description

Pioneering GTPase and Oncogene Product Development since 2010
