

ROCK2 RABBIT MAB

Cat.#: N261595

Product Name: Anti-ROCK2 Rabbit Monoclonal Antibody

Synonyms: p164 ROCK 2; Rho kinase 2; ROCK 2; Rock II; Rock2m; ROK alpha; ROKalpha

UNIPROT ID: O75116

Background: Regulates the assembly of the actin cytoskeleton. Promotes formation of stress fibers and of focal adhesion complexes. Plays a role in smooth muscle contraction.

Immunogen: A synthetic peptide of human ROCK2

Applications: WB, ICC/IF

Recommended Dilutions: WB: 1/500-1/1000 IF: 1/50-1/200

Host Species: Rabbit

Clonality: Rabbit Monoclonal

Clone ID: R01-4F1

MW: Calculated MW: 161 kDa; Observed MW: 161 kDa

Isotype: IgG

Purification: Affinity Purified

Species Reactivity: Human, Rat

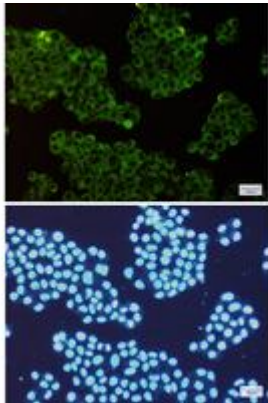
Conjugation: Unconjugated

Modification: Unmodified

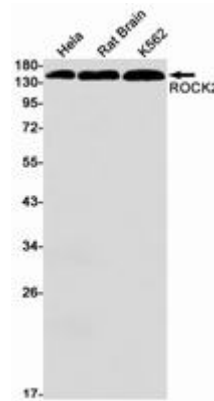
Constituents: PBS (without Mg²⁺ and Ca²⁺), pH 7.3 containing 50% glycerol, 0.5% BSA and 0.02% sodium azide

Research Areas: apoptosis - Caspase family

Storage & Shipping: Store at -20°C. Avoid repeated freezing and thawing



Immunocytochemistry analysis of ROCK2 (green) in HeLa using ROCK2 antibody, and DAPI (blue)



Western blot analysis of ROCK2 in HeLa, rat Brain, K562 lysates using ROCK2 antibody.